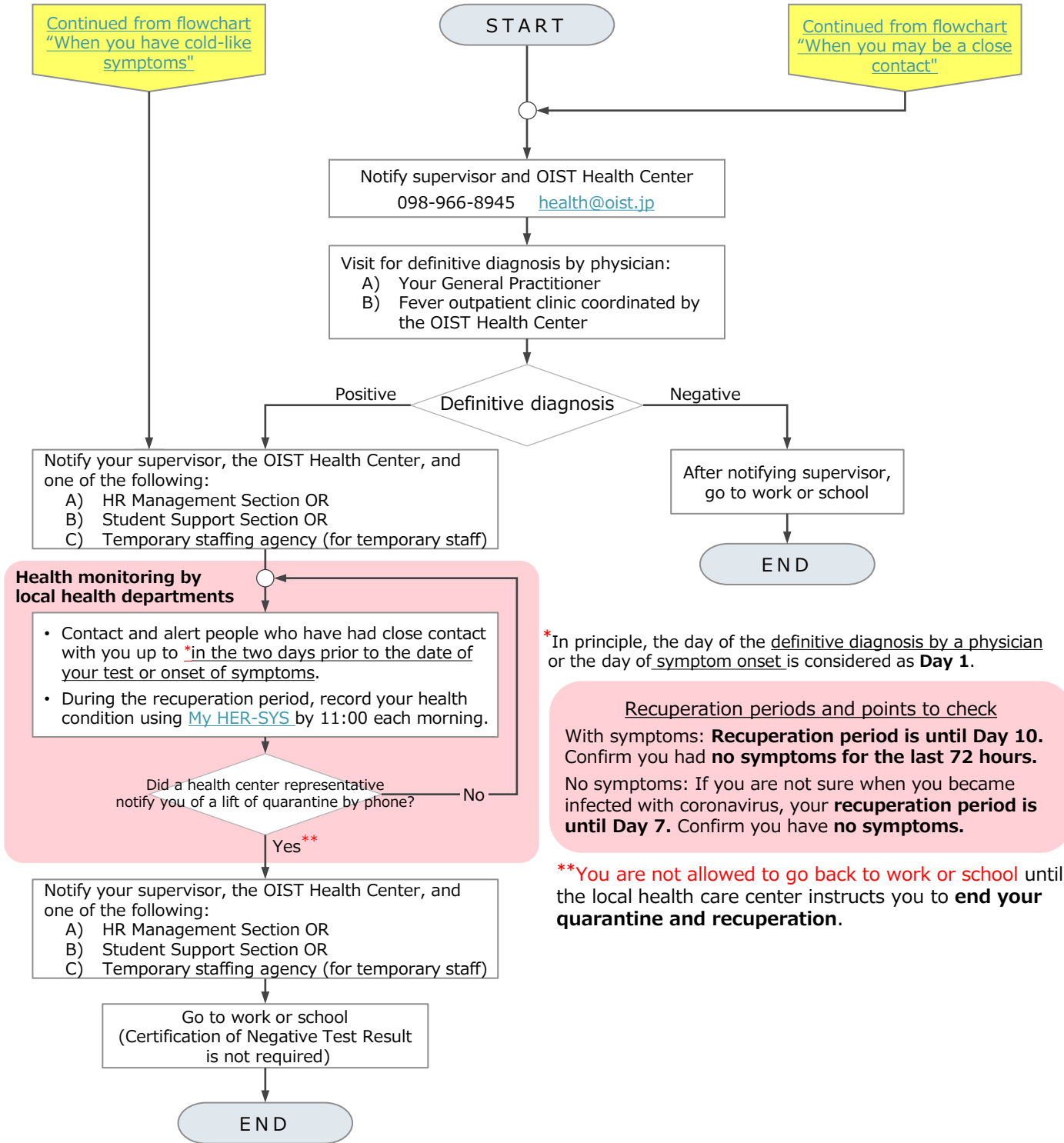




When you test positive

“Tests” include:

PCR tests conducted by PCR Testing Centers in Okinawa or OIST and antigen-kit tests.



*In principle, the day of the definitive diagnosis by a physician or the day of symptom onset is considered as Day 1.

Recuperation periods and points to check

With symptoms: **Recuperation period is until Day 10.** Confirm you had **no symptoms for the last 72 hours.**

No symptoms: If you are not sure when you became infected with coronavirus, your **recuperation period is until Day 7.** Confirm you have **no symptoms.**

**You are not allowed to go back to work or school until the local health care center instructs you to end your quarantine and recuperation.

If you have any questions, please contact the OIST Health Center. Phone: 098-966-8945, health@oist.jp