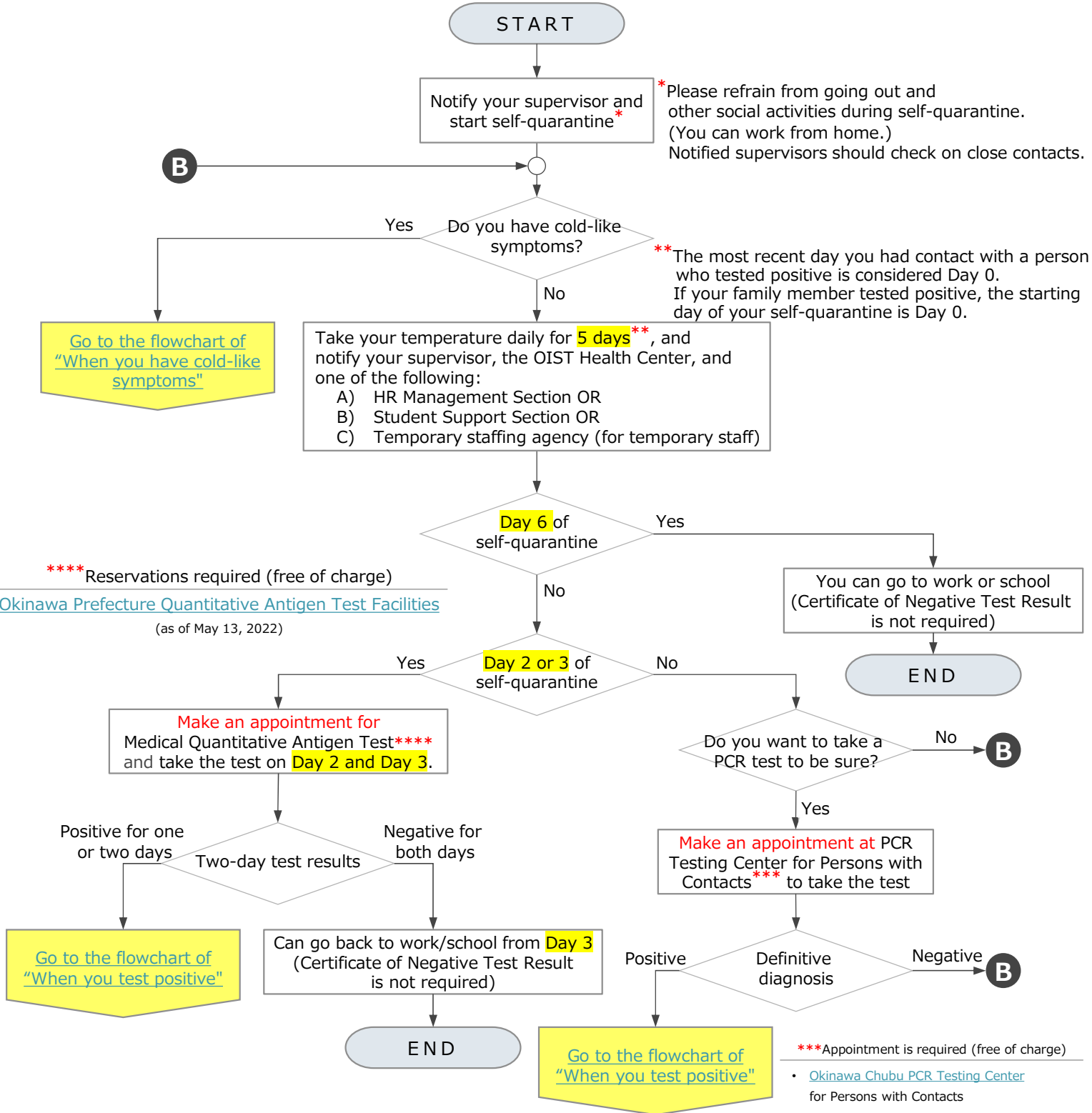




When you may be a close contact

What is considered as a close contact?

https://www.mhlw.go.jp/stf/covid-19/qa_03.html See [Q5]What is "Close contact"?



[Pharmacies with medical antigen test kits \(as of May 19, 2022\)](#)
Price range: 1,600-2,500 yen

For working conditions and attendance management under the influence of COVID-19, please [click here](#).
If you have any questions, please contact the OIST Health Center. Phone: 098-966-8945, health@oist.jp