

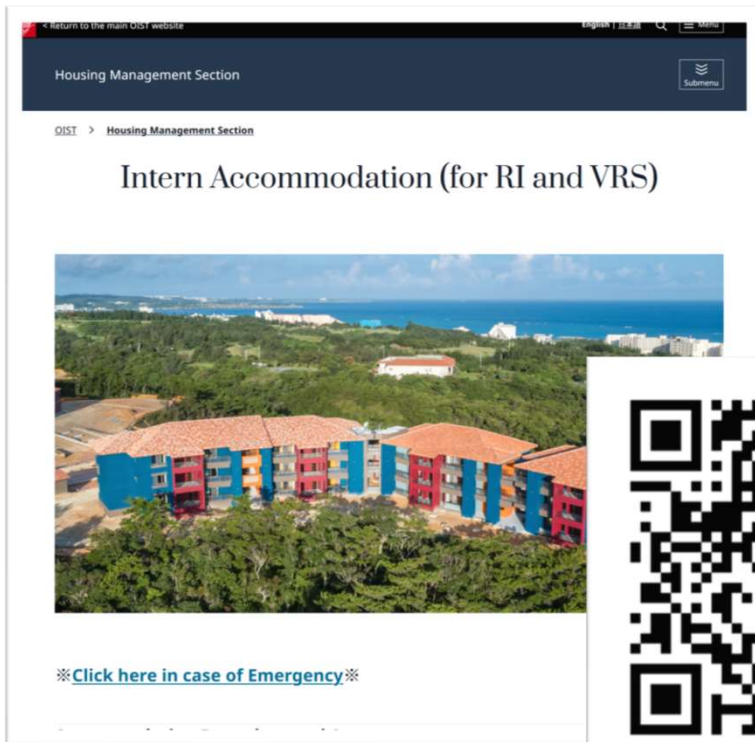
# Housing Orientation Housing Management Section





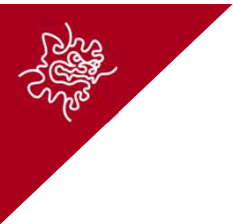
# Intern Accommodation Website

(In the room information email)



## Intern Accommodation Agreement

- Read the agreement before move-in.
- Entering the room means you accept the terms.
- If you break the rules, you may be asked to leave.



# Household Trash



☰ YouTube<sup>JP</sup>


検索



How to Dispose of Trash (Onna and Uruma)

# Household Trash

# IMPORTANT

- ① Separate your trash! 
- ② Buy designated garbage bags



[ Link ]

## Tancha Area

## How to Separate & Dispose of Household Trash

★Reduce and Recycle Wastes!★

## ● TYPES OF WASTE

### Onna Village

Burnable Wastes			Non-Burnable Wastes			Hazardous Wastes	
<b>Food Scraps</b>  Only food designated for composting No meat, dairy, or bones	<b>Cooking Oil</b>  Only household cooking oil No motor oil or other fluids	<b>Disposable Diapers</b>  Only household disposable diapers No adult or baby wipes	 Commonly found household appliances including but not limited to: a Crock-Pot, coffee maker, toaster, etc.	<b>Small Appliances</b>  Appliances such as: electric shaver, hair dryer, hair curler, etc.	<b>Personal Hygiene</b>  Products such as: toothpaste, toothbrush, razor, etc.	<b>Hazardous Wastes</b>  Flammable, corrosive, reactive, toxic, or otherwise hazardous materials	
<b>Recycling Containers</b>  Only plastic and glass containers No metal, wood, or other materials	<b>Long Paper/Carton For Mail/For Food Use</b>  Only paper and cardboard No plastic, metal, or other materials	<b>Yard Wastes</b>  Grass, leaves, twigs, etc. No stumps, branches, or other large debris	<b>Disposable Lighters</b>  Only household lighters No gas canisters, etc.	<b>Mini-Tool/Hedge Trimmer, etc.</b>  Only household tools No power tools, etc.	<b>Razors/Cutters/ Knives/Guns, etc.</b>  Only household items No firearms, etc.	<b>Breakable Glass</b>  Only household glass No mirrors, etc.	
<b>Butters</b>  Only household butters No margarine, etc.	<b>Binary Batteries</b>  Only household batteries No car batteries, etc.	<b>Household Appliances</b>  Only household appliances No commercial appliances, etc.	<b>Household Appliances</b>  Only household appliances No commercial appliances, etc.	<b>Household Appliances</b>  Only household appliances No commercial appliances, etc.	<b>Household Appliances</b>  Only household appliances No commercial appliances, etc.	<b>Household Appliances</b>  Only household appliances No commercial appliances, etc.	
<h2 style="text-align: center;">Recyclables</h2>							<b>Household Appliances</b>  Only household appliances No commercial appliances, etc.
<b>Paper Wastes</b>  Only paper and cardboard No plastic, metal, or other materials	<b>Books</b>  Only household books No textbooks, etc.	<b>Household Appliances</b>  Only household appliances No commercial appliances, etc.	<b>Carburetors</b>  Only household carburetors No commercial carburetors, etc.	<b>Steel Cans</b>  Only household steel cans No food cans, etc.	<b>Aluminum Cans</b>  Only household aluminum cans No food cans, etc.	<b>PET Bottles</b>  Only household PET bottles No other plastics, etc.	<b>Clothes</b>  Only household clothes No commercial clothes, etc.
<b>Paper Cartons</b>  Only household paper cartons No food cartons, etc.	<b>Household Appliances</b>  Only household appliances No commercial appliances, etc.	<b>Carburetors</b>  Only household carburetors No commercial carburetors, etc.	<b>Aerosol Cans</b>  Only household aerosol cans No food cans, etc.	<b>Steel Cans</b>  Only household steel cans No food cans, etc.	<b>Aluminum Cans</b>  Only household aluminum cans No food cans, etc.	<b>PET Bottles</b>  Only household PET bottles No other plastics, etc.	<b>Clothes</b>  Only household clothes No commercial clothes, etc.
<b>Household Appliances</b>  Only household appliances No commercial appliances, etc.	<b>Household Appliances</b>  Only household appliances No commercial appliances, etc.	<b>Carburetors</b>  Only household carburetors No commercial carburetors, etc.	<b>Aerosol Cans</b>  Only household aerosol cans No food cans, etc.	<b>Steel Cans</b>  Only household steel cans No food cans, etc.	<b>Aluminum Cans</b>  Only household aluminum cans No food cans, etc.	<b>PET Bottles</b>  Only household PET bottles No other plastics, etc.	<b>Clothes</b>  Only household clothes No commercial clothes, etc.
<b>Household Appliances</b>  Only household appliances No commercial appliances, etc.	<b>Household Appliances</b>  Only household appliances No commercial appliances, etc.	<b>Carburetors</b>  Only household carburetors No commercial carburetors, etc.	<b>Aerosol Cans</b>  Only household aerosol cans No food cans, etc.	<b>Steel Cans</b>  Only household steel cans No food cans, etc.	<b>Aluminum Cans</b>  Only household aluminum cans No food cans, etc.	<b>PET Bottles</b>  Only household PET bottles No other plastics, etc.	<b>Clothes</b>  Only household clothes No commercial clothes, etc.

**Collection Days** ★Put out waste by 8:00 AM on collection days. (Do not put out on the night before to avoid scattering by cats or Dogs.)

District		Nakama	Kiseruaba	Onna	Mech-Otha	Mageenke	Yamada
		Afuso	Seragiki		Fanchuka	Nakadorami	Shioya
Type		Unit	Unit		Unit	(Ind. New Town)	Unit
<b>Burnable</b>		500 x 150	500 x 200	500 x 200	500 x 150	500 x 200	500 x 200
<b>Non-Burnable</b>		100	200	200	100	200	200
<b>Build Wastes</b>		1st & 3rd Mon			2nd & 4th Mon		
<b>Recyclables</b>		1st & 3rd & 4th	2nd Mon, Sat, Sun		3rd Mon, Sat, Sun		

Prices for Designated Waste Bags			
Type	Size	Price (incl. Tax)	
<b>Burnable</b>	L (Pkg. of 10)	<b>¥300</b>	
	M (Pkg. of 10)	<b>¥200</b>	
<b>Non-Burnable</b>	M (Pkg. of 10)	<b>¥200</b>	
	L (Pkg. of 10)	<b>¥200</b>	
<b>Recyclables</b>	M (Pkg. of 10)	<b>¥150</b>	
	L (Pkg. of 10)	<b>¥150</b>	

• Do not put out recyclable paper on rainy days. Keep until next clear collection day.

### Bulk Waste Collection

**1. Collected by the Village Office:**  
BY APPOINTMENT ONLY; submit desired collection date when purchasing a bulk waste disposal ticket at the Onna Village Residents Division or at your local community hall. Put out the waste with the ticket affixed in front of your house (or apartment building) on the reserved date.

**2. Personally Transport to Landfill Site (Charge applies):**

¥100/10kg; maximum of 2t/day per h demolition.

Hours: 9AM to 5PM (closed for lunch)

Closed Tuesdays & Jan. 1 to 3.

Point of Contact: Residents D

### Fees

Large

¥600

100

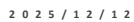
Small

¥300

965-64

903 04





## Control Humidity

- **Mold**

If you see mold, please wipe away asap!



Recommended A/C setting

**Feb 15 – Nov 15:**

(Dry mode : -1 to +2)

Or

Cool Mode at 25 or 26°C

Nov – Feb 15 : Up to you!

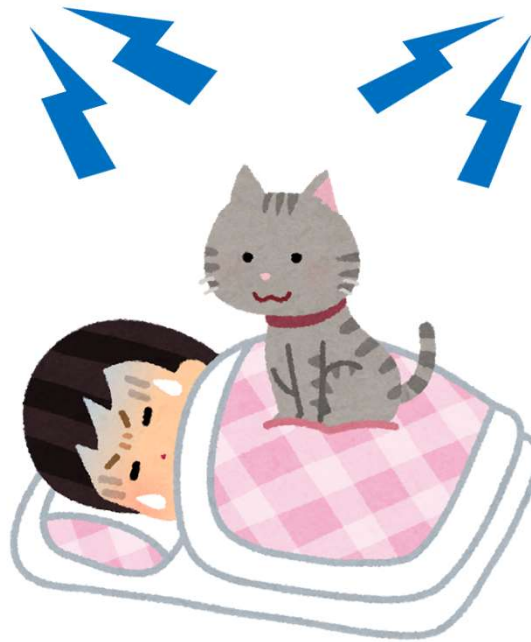
- **Condensation**



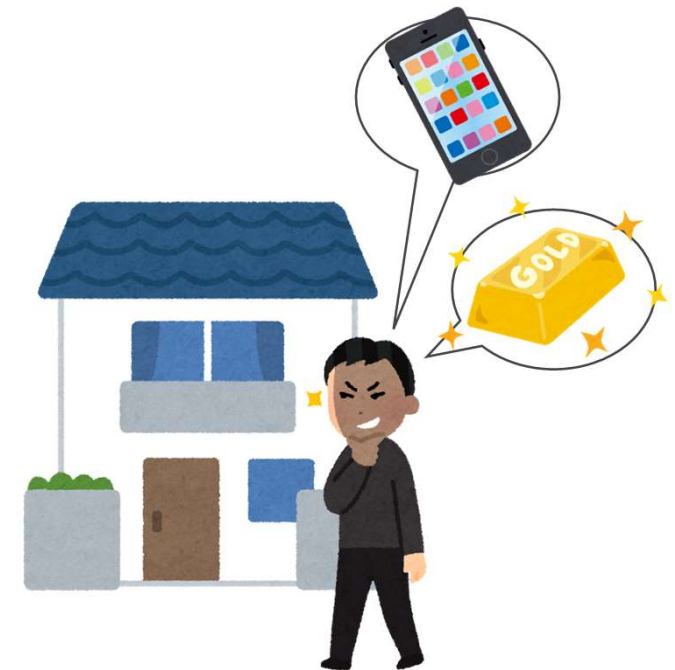
**Flush only toilet paper  
in the toilet.**



**Keep noise low  
after 8 PM.**

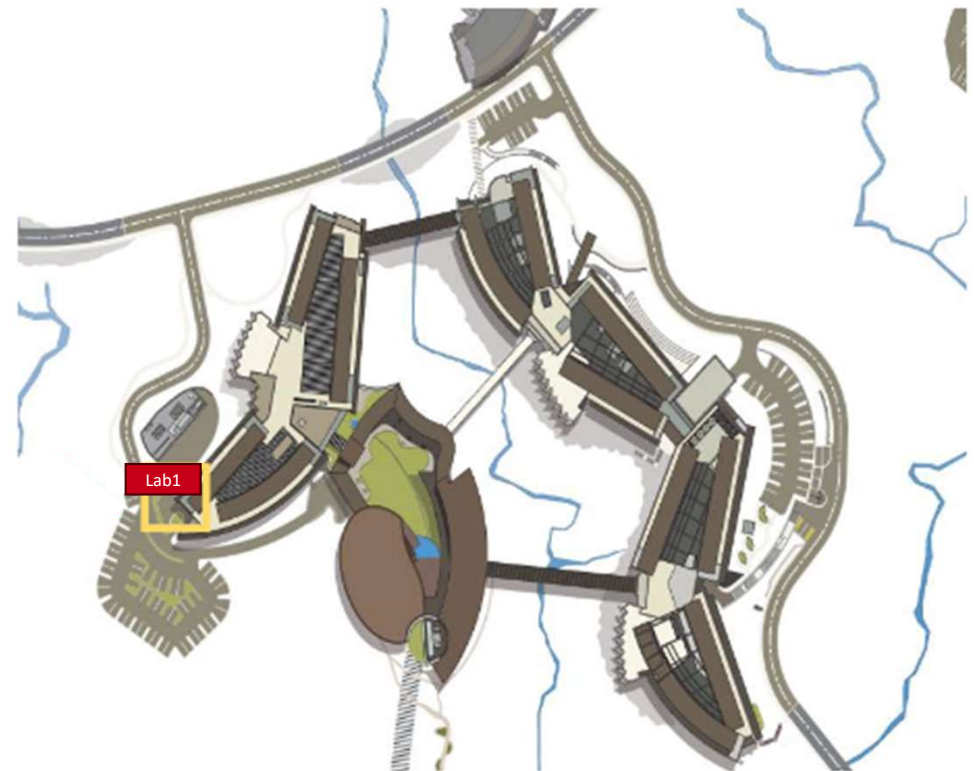


**Lock doors**





## NO SMOKING in the Residential Area





## Move-Out

Inspection with you  
(5 – 7 days before)

- Please participate!
- Clean before the inspection



Move-Out

- Do not leave anything!
- Return the key to the RED MAILBOX.



Check after  
Move-out

- OIST will check the empty room after move-out.



## Contact Information



University



### Housing Management Section

[student-housing@oist.jp](mailto:student-housing@oist.jp)

#### OPEN HOURS

**Weekdays** 9:00 – 17:30

- Room allocation
- Move-out inspections



合人社 The Gardens Office

Housing Management Company



### Gradens Office

[gardens\\_office@gojin.co.jp](mailto:gardens_office@gojin.co.jp)

#### OPEN HOURS

**Weekdays** 9:00 – 18:00

**Weekends & Holidays** 9:00 – 17:00

- Building management
- Furniture, A/C, Gas stove, Door



# Intern Accommodation Website

(In the room information email)

