

TSVP

OIST's VISITING PROGRAM

Welcome Meeting

An aerial photograph of the Okinawa Institute of Science and Technology (OIST) campus. The image shows several large, modern academic buildings with grey roofs and glass facades, interspersed with lush green trees. In the background, a turquoise body of water meets a sandy beach. The entire scene is framed by a purple overlay with a faint floral pattern.



Haisai and Welcome to OIST!

- **Mensore** = Welcome, Haisai = Hello / Good day
- About the local language of Okinawa: Uchinaaguchi

<https://groups.oist.jp/ja/resource-center/introduction-uchinaaguchi>

Further Examples:

Shima – Can mean both Island and Community

Ichariba choodee – A saying that means

“Once we meet, we are all family”



All files from the welcome email are available for download here (incl. this presentation):

<https://groups.oist.jp/tsvp/welcome-oist> **FAQ:** <https://groups.oist.jp/faq/faq-12>

Photo credit: <https://www.travelvoice.jp/>



OIST Campus

- Lab buildings
- Restaurants
- AEON Convenience store (open daily 8am to 8pm)
- ATMs



The TSVP office area is in Lab 5 on floor EF. Lab 5 can be reached by walking from the main entrance or Lab 2/3 via Lab 1 through the tunnel on level B; or by walking up the hill outside. TSVP apartments are located in "the Gardens" and near "Village Center".

Other offers

- [C-Hub](#): Center for Professional Development and Inclusive Excellence in Lab 4 offers consultations, mentoring, courses,...
- [OIST Health Center/Clinic](#) in Lab 4 (more on Health later)
- [Ganjuu Wellbeing service](#): free and open to anyone who is part of the OIST community
- [Language Education](#)
- ...

OIST Main Campus

Center Building:
Cafeteria, Café,
Food Vendors

Village Center:
Convenience Store
with ATM (AEON),
Gym,
Resource Center





First Steps

- Did you receive your Visitor/**OIST ID card** to enter OIST buildings?
- Your office (key?, ID card)
 - > Cleaning staff may enter any office, usually in the early morning. Please let us know if you do not want that
- Did you already get **OIST account**? You will receive information about (research) events and talks at OIST. It is also needed for printing and making room reservations.

Note: your OIST account will only be active until the last day of your tenure. If your visit dates have changed on short notice, it will *not* automatically be extended. Visitors coming less than 1 month will not receive an OIST account.
- May we **share your email with other visitors** to arrange evening/weekend activities?
- About per-diem/reimbursement **payments** etc.

Payment usually takes 6-8 weeks, recently delays occurred due to staff member shortage in the accounting section. For *short stays* (up to 3 months) we usually make one payments after your stay ends which reduces banking fees
- **We would like to schedule meetings with PIs you named in your application**
[Overview of all 90+ Research units, Science and Technology Groups](#)
- **TSVP Thursday** (Talks and/or Teatime)

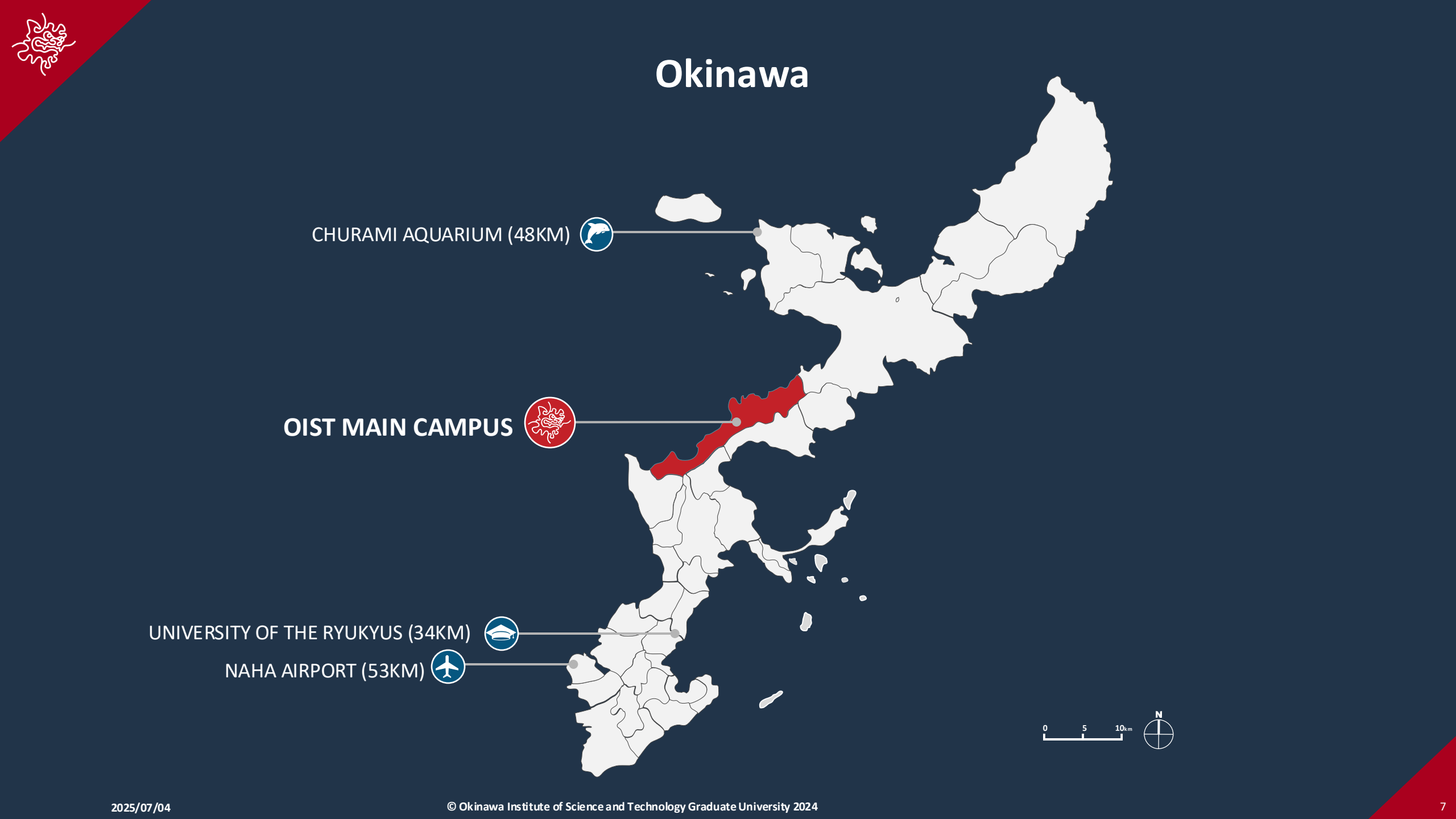




Okinawa Location



Okinawa encompasses around 150 islands in the East China Sea and resides between Taiwan and the Japan's mainland. With a subtropical climate, coral reefs and rain forest, it is the southern most prefecture in Japan.



Okinawa

CHURAMI AQUARIUM (48KM)



OIST MAIN CAMPUS



UNIVERSITY OF THE RYUKYUS (34KM)

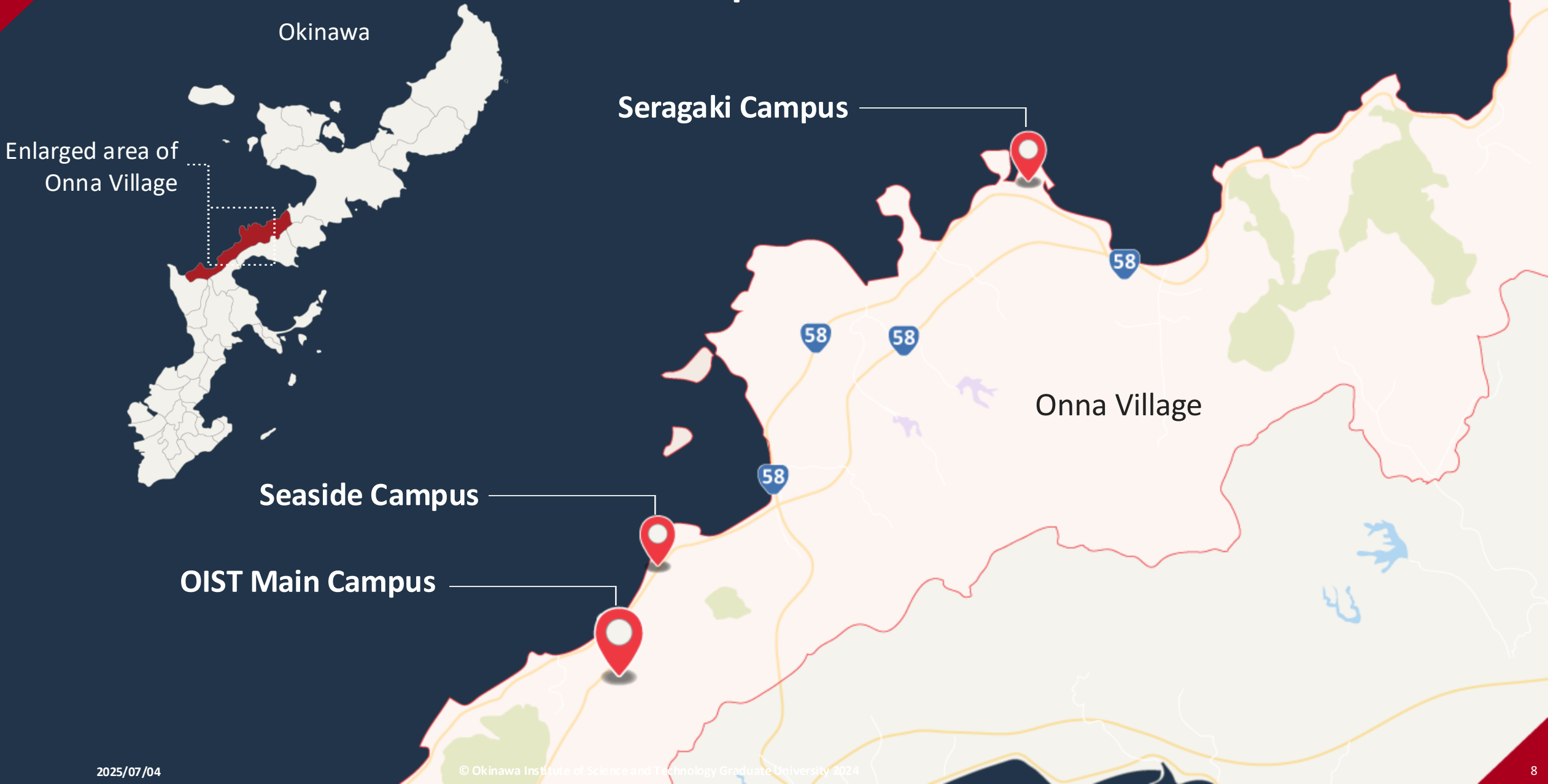


NAHA AIRPORT (53KM)

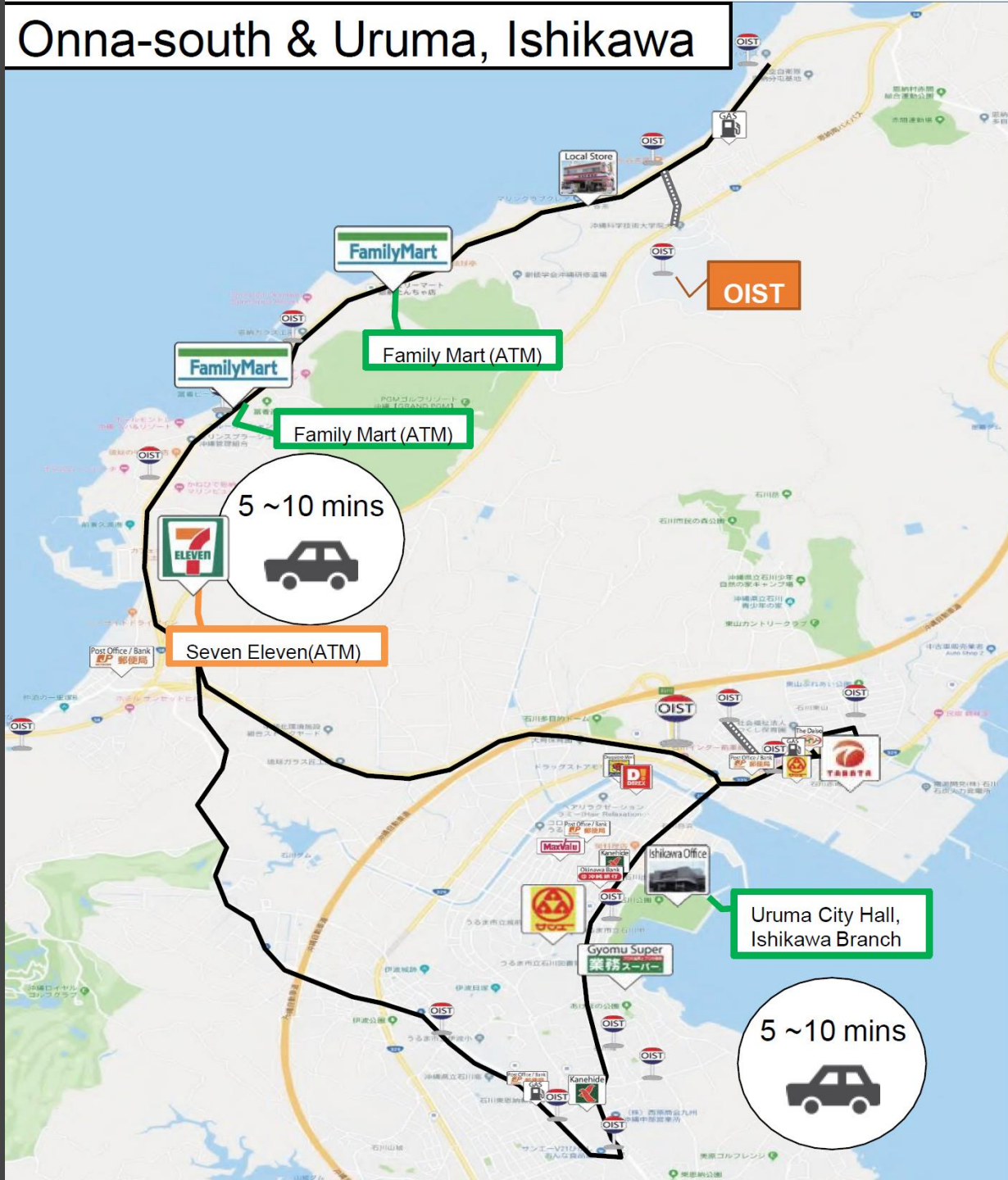




OIST campus locations



Travel Time to OIST



Getting around Okinawa

For TSVP visitors who live on campus the closest opportunity for [grocery shopping](#) is a 20-30 minute walk away (aside from the small convenience store on campus).

Driver's License

If you plan to drive a car in Okinawa/Japan, please check whether you need an international driver's permit or a Japanese translation of your license.

Rental Car

You can find more information about renting a car at OIST's Resource Center <https://www.oist.jp/resource-center/rent-a-car-in-okinawa>

OIST also has an **internal rental car service** which visiting researcher can use. It requires prior registration and can only be used for 22h consecutive hours, but it is rather affordable.

<https://groups.oist.jp/bfm/rental-car-service> (accessible on campus only)

Shuttle Bus

-> following pages (with links to schedule)



Getting around Okinawa

OIST Bicycles

Bicycles are another way to move around the island, although getting up the OIST hill can be quite the challenge, especially in summer. **There are several electric bicycles reserved for visitors of the TSVP** so please ask if you would like a bicycle (free for visitors).

Usage is at your own risk and there is no insurance. You may have to fix a punctured tire or pay for a repair if you caused it.

You have to agree to the [Bike Share Club by-laws](#) before riding (by signature or email confirmation).

More information: <https://groups.oist.jp/bike>
please also join the [Bike Share Club MS Teams](#) to report any issues

[Agreement
by email](#)



⏻ Press power switch **before**
starting to cycle



- △ Stronger assist/ Power mode (パワー)
- Middle setting is automatic mode (オート)
- ▽ Eco/Long-range mode (エコ)



Bicycle/ tire lock key is
needed to remove battery
(there may be an
additional, external lock)



Never switch on the motor during cycling – it will cause damage



Getting around Okinawa

Public Transport

There are not many bus lines in Okinawa, but you can use them to go to Naha (airport), Nago (aquarium), etc. You will need some coins or 1000 JPY notes to pay the fare (credit cards and mainland IC cards are not accepted). You can find bus information [here](#), or use Google Maps or similar apps. Buses are often delayed for 10-20min so expect a little bit of waiting time at the bus stops. An alternative are buses that run directly from the big hotels in Onna village to Naha airport or Nago, these go on the highways and are thus less likely to be delayed due to traffic, information here: https://okinawabus.com/en/ls/ls_timetable_fares/.

Within Naha city the Monorail is a convenient way to get around.



Taxi/Daiko

Occasionally you might want to call a taxi, which can be a challenge in Japanese. Often restaurant staff can help you, in other cases you can ask the OIST Resource Center, or check this website for information about taxis in Okinawa:

<https://visitokinawajapan.com/plan-your-trip/getting-around-okinawa/taxis-in-okinawa/>. They recommend the DiDi or JapanTaxi apps as a convenient way to reserve taxis in advance. Uber can also be used to request (regular) taxis in Okinawa, but there might be long wait times. Okito Taxi also has an English reservation website where you can request a taxi pickup until noon the day before: <https://en.okito.or.jp/reservation/> (pick the empty, last entry for "Selected sightseeing course").



In Japan and Okinawa there is also a service called "Daiko", where a driver comes and drives your car home. This substitute driving service is convenient if you drink alcohol since the limit in Japan is 0 and the punishment for drinking and driving is strict.

The way it works is that two drivers with a car will come to pick you up. One of them drives you home in your car, and the other driver follows behind to pick up the first driver when you get to your destination.

You will see a Daiko Service list at restaurants that offer alcoholic drinks and at pubs. Please ask the establishment's staff to call Daiko Service for you or have a Japanese-speaking friend to do so. More information on Daiko (and other public transportation) at the bottom of this page: <https://www.oist.jp/resource-center/okinawa-general-info#toc6>



SIM Card / Phone number

Mobile Internet only

So-called Mobile Virtual Network Operator (MVNO), like Linemo, ahamo, GTN Mobile, etc. are the cheapest option. Some common providers are listed at the below link, or at japan-guide.com and tokyocheapo.com.

You might also consider an **international eSIM** card with which you can access the internet in Japan, e. g. from airalo, nomad, or ubigi (links not intended as endorsement of the listed products).

In Okinawa, you have the following options:

Lawson in Onna village (ローソン 恩納万座毛入口店) recently started providing SIM cards. → <https://tr.iijmio.jp/> *can receive calls

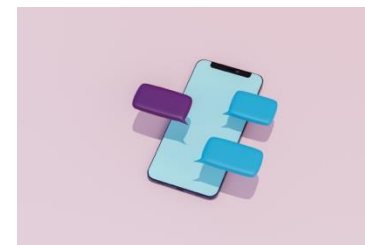
Other shops, e.g. Bic Camera ([3rd floor at AEON shopping mal in Okinawa city](#)) also offer short-term Data-only Sim cards:

3 GB --- 2,480 yen // 6 GB --- 2,980 yen

When you visit them, please head to the cashier and show the following sentence.

「取り置きしていただいている6GBのトラベルSIMを買いにきました。」 (I would like to purchase 6 GB travel SIM.)

[Detail of SIM Cards](#)



Phone number

If you **require a phone number** (e.g. necessary if your child is going to OIST's childcare), it may be more complicated because the phone contract requires a confirmed address in Japan (which can be difficult).

Mobal

A company called Mobal (Softbank network) can provide a phone number and has the following advantages:

(1) **Pickup at OIST's Resource center**

(2) You can get a Japanese phone number before you get a residence card.

(3) They accept international credit cards (but NOT prepaid credit cards!)

(4) English customer support is available

(-) Slightly more expensive than some other services like Linemo; APN may have to be installed manually

Discounted price for OIST staff and guests: <https://www.mobal.com/japan-sim-card/?source=3504>



Please check the **Resource Center Guide** and inquire with them for more details:
<https://www.oist.jp/resource-center/getting-phone-number>



OIST Shuttle Bus schedules

2022 version of shuttle bus timetables (revised October 2022):
<https://groups.oist.jp/bfm/shuttle-bus>

Ishikawa Line (Weekdays)

Important Stop:
Tabata/Akasaki: Local Produce at Tabata, San-A Supermarket, Home Center Tabata, and small Electronics Shop (also Tabata)

Ishikawa IC Line

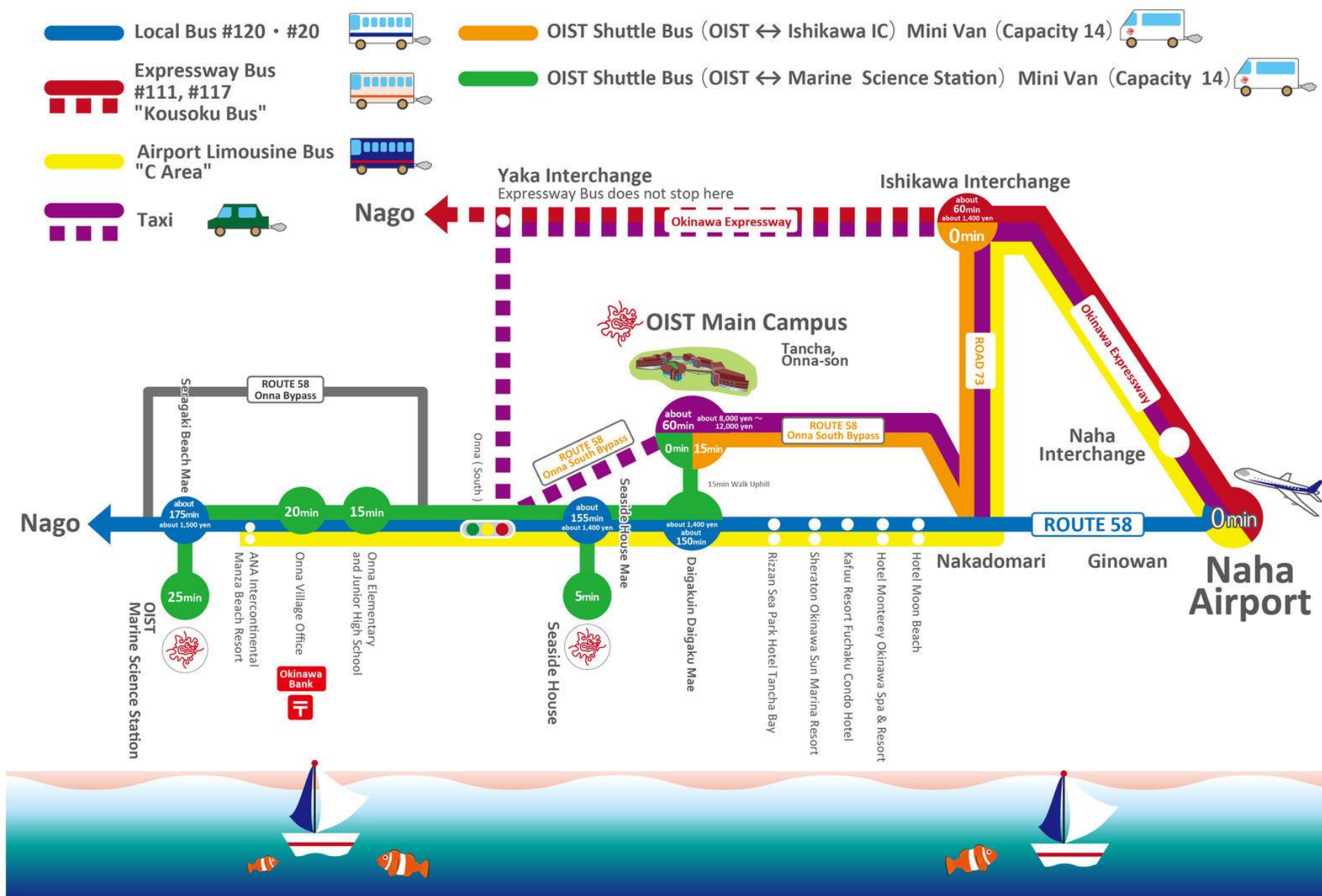
Important Stop: Highway Bus stop to Naha (Airport)

Seragaki Line

Important Stop: Onna Village Office, OIST Seaside House

Weekend Shuttle

Important Stop:
Onna no eki (local produce and souvenirs)





TSVP Infrastructure and Team



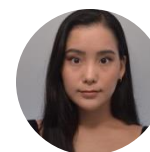
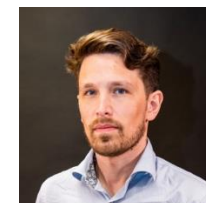
Aerial view of 'The Gardens' housing



TSVP Offices and Discussion Area in Lab 5 (opened April 2023)

- Dedicated on-campus **housing** at 'The Gardens' and 'Village Center': 13 apartments
- Dedicated **office space** in Lab 5 building, open discussion area surrounded by offices. [Access](#)
- The program is managed by TSVP Team (part of the **Dean of Research Office**)
Academic Manager: Dr. Jonas Fischer
staff members: Chiyo Eto, Haruka Furukawa, Yu-Jhen Lin,
Anna Hanashiro, Kayo Shimizu, Hiroko Oi (cleaning staff)

→ Visiting Program grew from 20 visitors in FY2022 to 150 visitors in FY2024
(30 Visiting Scholars, 10+ Domestic Visitors, 90+ through Thematic Programs)





Documents to Sign

Please sign/send us:

- Visiting Researcher Agreement (long-term visitors)
- (In some cases: Service Agreement)

- **Visiting Program accommodation rules:**

[07TSVPAccommodationRules_20240806.pdf](#)

>> **Please let us know right away if there is any damage or issues in the apartment!**

>> Please don't bring corals and sand in,
it is very hard to clean up



-> Digital Signature/ [by email](#) is fine!

-> Can be downloaded here:

<https://groups.oist.jp/tsvp/welcome-oist>

(bottom of the page)

- Please give us your **(paper) boarding passes** now if you brought them



* We have a small number of items donated by previous visitors that we can lend you, e.g. hair dryers, snorkeling fins, or an iron. If you notice items in your apartment that are not listed on the furniture list, they were likely donated. We cannot replace them, but you might be able to find something appropriate in the [OIST Marketplace \(on TIDA, the OIST intranet\)](#).

VISITING PROGRAM

OIST was founded twelve years ago with the aim to "be the destination of choice to work, learn, and collaborate, linking science to education and leading to innovation and entrepreneurship."

Being in a different environment often leads to new perspectives and ideas, which are crucial for scientific breakthroughs.

Towards that aim the Visiting Program was initiated in 2021, with the goal of bringing leading research experts to OIST for extended visits. The first arrived in 2022, followed by 20 more in the first year. In the first three years a total of 260 visitors came to OIST through the program.

Visitors get on-campus housing, office space, access to OIST resources,...

In keeping with OIST's interdisciplinary mission, **the program spans all research areas** including, but not limited to, chemistry, engineering, life sciences, mathematics, physics, and quantum research.

Visiting Scholars: individual visitors, usually staying at OIST from 3 to 12 months.

Thematic Programs: several visitors from the same area reach OIST at one time (<3 months) to form an impromptu research group, often accompanied by linked symposium.

Domestic Visitors: visitors working in Japan during their proposed visit. More flexible visits.

Calls for **Visiting Scholars** usually open in the Summer,

Domestic Visits are on a rolling deadline (open now).

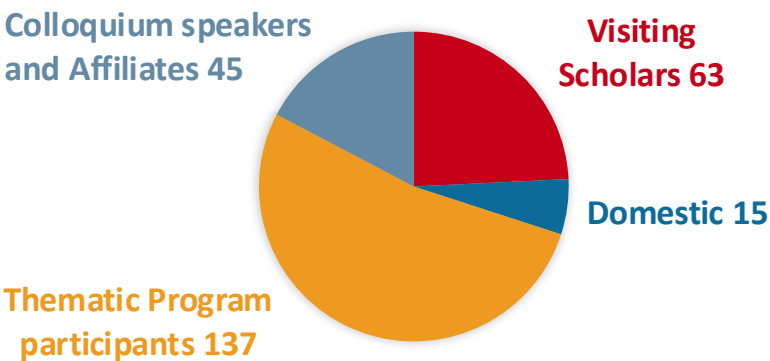


www.oist.jp/visiting-program

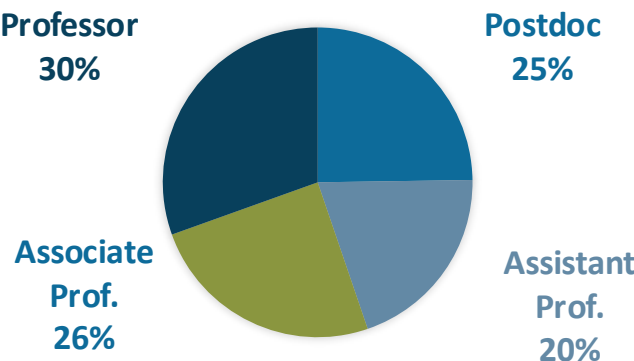


First three years: March 2022 – March 2025

260 VISITORS



CAREER STAGES



- 97+ research articles including publications in Nature, Ecology Letters
- 70 General-audience “TSVP Talks”, bringing over 3800 participants and over 12000 views on Youtube
- 11 workshops (co)organized by Visiting Program, and over 120 Research Seminars
- 13 lecture courses for students, 12 career talks, 10 outreach talks
- Visitors interacted with 75+ OIST Units (projected to rise to all 92 Units by the end of FY 2025)
- EU-Japan grant projected kicked off April 2024, collaboration with NAIIST and Europe (Sustainable Mobility in Onna, Okinawa)
- 1 of 2 Clarivate “Highly-cited Researchers” in 2023 at OIST (visitor: Shinichi Nakagawa)



Academic Partnerships

- OIST has 10 Partner Institutes in Japan with which we collaborate in various ways.
- For example, OIST agreed on the possibility of visiting researcher exchange with **Kyoto University's Research Institute for Mathematical Sciences (RIMS)**

A list of their upcoming workshops can be found here:  **Research Institute for Mathematical Sciences**
Kyoto University
<https://www.kurims.kyoto-u.ac.jp/kyoten/en/workshop.html>

→ If you are interested in this opportunity please let us know.



More on **OIST's Academic Partnerships**:

<https://www.oist.jp/academic-partnerships>

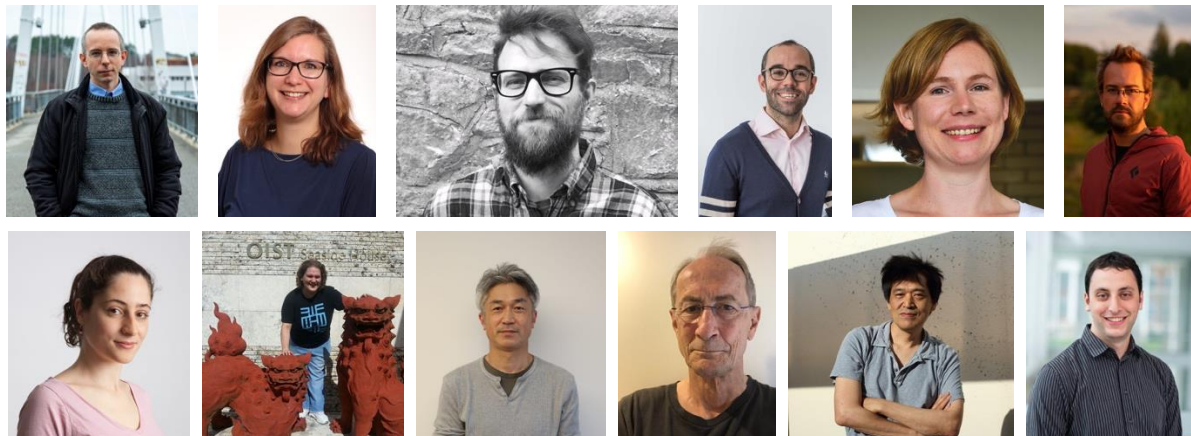


Visitors

→ Visitor List: <https://www.oist.jp/visiting-program/visitors-list>

Current and Upcoming Visitors

- Visitors in the program have no host unit. They can collaborate with as many OIST research units as they want. Usually they have 1-5 “Units of Interest”.
- Visitors come from a wide variety of fields
- Through the visitors new connections between OIST units emerge
- In their feedback, visitors have mentioned the ability to interact with OIST researchers outside their main field and exchanging ideas as great benefits of the program
- Often unexpected connections emerged after general-audience talks



Name (Home Institution)	Arrival	Departure	Field	Units of Interest
Nicola De Nitti (École Polytechnique Fédérale de Lausanne)	2026-03-02	2026-05-31	Mathematics, Partial Differential Equations, Analysis, Control	Abdulla, Chakraborty, Gioia, Liu, Yamada
Miguel Lurgi (Swansea University)	2026-02-01	2026-04-30	Ecology and Evolution, theoretical ecology, ecological networks, microbial ecology, ecological modelling	Armitage, Dieckmann, Economo, Husnik, Kondrashov, Myers, Pao, Pigolotti, Ravasi, Sallan
Daniel Maria Busiello (Max Planck Institute for the Physics of Complex Systems)	2026-01-05	2026-04-20	Physics, Stochastic processes, Information theory, Non-equilibrium thermodynamics, Physical chemistry	Fukunaga, Pao, Pigolotti, Reiter
Paolo Salani (University of Florence)	2026-01-04	2026-01-20	Mathematics, Partial Differential Equations, Convex Geometry	Liu, Zhou
Torbjörn Lundh (Chalmers University of Technology)	2026-01-04	2026-07-01	Mathematics, Biology,	Abdulla, Dieckmann
Klaas Landsman (Radboud University Nijmegen)	2026-01-04	2026-06-30	Mathematics, Physics, History and philosophy of science, Foundations of physics	Ekert, Höhn, Neiman, Toriumi
Naotsugu Tsuchiya (Monash University)	2025-12-01	2026-02-28	Biology, Computer Science, Mathematics, Neuroscience, Physics	Bandi, Dieckmann, Doya, Elkouss, Froese, Fukai, Fukunaga, Hikami, Liu, Miller, Nemoto, Pigolotti, Reiter, De Schutter, Shannon, Speyer, Stephens, Tani, Toriumi, Tripp, Twamley, Uusisaari, Wickens, Yamada, Yazaki-Sugiyama, Yoshida, Zhou
Michael Vynnycky (Limerick University)	2025-12-01	2026-02-15	Engineering and Applied Sciences, Mathematics, Asymptotic Methods, Numerical Simulation, Industrial Mathematics	Abdulla, Chakraborty, Gioia, Rosti, OIST Innovation
Tianyi Chen (Rensselaer Polytechnic Institute, USA)	2025-11-05	2025-12-28	Computer Science, Engineering and Applied Sciences, Bilevel optimization and machine learning	Pao, Yamada
Christophe Claramunt (ISBlue)	2025-10-27	2025-11-14	Computer Science, Geographical Information Science	Yamada, Armitage
Stefano Pironio (Université libre de Bruxelles)	2025-10-15	2026-03-14	Physics, Quantum Information Theory	Aaraj, Cid, Ekert, Elkouss, Fukai, Höhn, Munro, Nemoto, Yamada
Robert Joynt (University of Wisconsin-Madison)	2025-10-01	2025-12-22	Physics, Condensed Matter Theory, Quantum Computing Theory	Munro, Okada, Shannon, Twamley
Avadh Saxena (Los Alamos National Laboratory)	2025-10-01	2025-12-30	Physics, Condensed Matter Physics	Bandi, Dani, Chakraborty, Shannon, Busch
Ko Sakai (University of Tsukuba)	2025-09-16	2025-12-26	Neuroscience, Computational Vision Science	Doya, Froese, Fukai



Talk and profile on Website

Please send us via email:

Template Word File (directly by email is fine too)

[11Poster Template v20230410.docx](#)

- Your Field
 - A Photo (high-resolution for poster printing)
 - Short Profile
 - (Optional) Personal website or a link to Google Scholar, etc.
-
- Details about your talk: title, abstract, date
 - Also please suggest Chair for your talk (collaborating OIST PI?)
-
- May we record your talk and put it on Youtube?
 - If yes, we will ask you to sign a [release form](#)

Takashi Ikegami

Visit from 2022/08/08 - 2022/12/19

Takashi Ikegami is a Professor at the Department of General Systems, Graduate School of Arts and Sciences of the University of Tokyo. He works in the area of artificial life research. His simulation and experimental research interests include open-ended evolution in artificial life models, experiments with self-moving droplets, large-scale Boids models, and new theories of collective intelligence. He also conducts experiments on consciousness using an android (ALTER-3). At the same time, he has presented performance art (Kugutsu Kagura2020) with ALTER-3 and VR (SnowCrash at WhiteHouse 2021, Reverse Destiny Bridge at AICHI2022). [Personal Homepage](#)

TSVP Talk: "[Collective Intelligence in Living/Nonliving Systems](#)" on September 29 at 4pm



Sebastiano Nicolussi Golo

Visit from 2022/08/05 - 2022/10/31

Sebastiano Nicolussi Golo is a postdoc in mathematics at the University of Jyväskylä in Finland (EU). He works on the interface between metric analysis and Lie group theory. He has worked in sub-Riemannian geometry and later he expanded his interests to geometric measure theory on Lie groups equipped with non-Riemannian distances. He completed his Ph.D. from the University of Jyväskylä in 2017. [Personal Homepage](#)

TSVP Talk: "[Sub-Riemannian Geometry Is Everywhere!](#)" on September 9 at 10:40am
Office at OIST: L4E25j



Mog Stapleton

Visit from 2022/06/10 - 2023/03/31

Mog Stapleton is a researcher at East China Normal University. Her background is in cognitive science and philosophy (with master's degrees in both). She received her PhD from the University of Edinburgh in 2012. Her research focuses on embodied, embedded, enactive, and extended (so-called "4E") approaches and on the importance of affect for cognitive science. She is co-editor-in-chief of the journal Cognitive Systems Research. [Google Scholar](#)

TSVP Talk on November 17 at 4pm
Office at OIST: L4F22d





Talks and other activities

- **TSVP Talks:** general-audience lectures. Usually held on Thursdays at 3pm in Lab 4 Room E48
- **Research seminar:** contact researcher at OIST to schedule a talk in their group seminar, etc. (TSVP can help organize and advertise to OIST community)
- **Lecture (series) for students/Career talks/mentoring/open-topic talks:** targeted at students or young researchers at OIST. This is highly encouraged to strengthen ties to the OIST community (organized together with OIST Grad school). Lecture for credits are also possible but require a little more preparation
- **Outreach/school visits:** OIST occasionally hosts outreach or science introduction events (for children), if you would be interested be sure to let us know (usually organized with OIST Community relations team)

expected

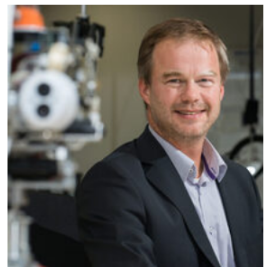


Academic Careers in Europe with Dr. Kerstin Lenk

2022-08-10

L4E48

Dr. Kerstin Lenk, Graz University of Technology. Language: English (no interpretation). Target audience: Young Researchers. Freely accessible to all OIST members and guests without registration.



Graduate School

Career Talk by Dr. Jochen Steil

2023-07-10

Lab3 C700

Looking back to my career, nothing was expected and many unforeseen twists found me moving from mathematics, through neural networks and AI to (humanoid) robotics, control and industrial applications, ending up finally as an entrepreneur as latest development. I will highlight a few pivotal points in my career and try to explain some of the decisions leading up to them in a rather informal



highly encouraged

[Mini-course] BV functions in Carnot groups | Speaker Dr. Sebastiano Nicolussi Golo, University of Jyväskylä

2022-08-22 to 2022-08-24

L4E48 | B700 | Zoom

Speaker: Dr. Sebastiano Nicolussi Golo, University of Jyväskylä

Title: BV functions in Carnot groups

Language: English, no interpretation.

Topics requested by students

- Scientific writing
- Presentation (public speaking)
- Grant application writing
- Networking (conferences, interdisciplinary collaboration, research collaboration community building, etc.)





General-audience Talks

- 70+ talks so far, 3787 total participants (53 average)
- Most talks uploaded to Youtube (12000+ total views, 220 average, 320 for FY22)

<p>THEORETICAL SCIENCES VISITING PROGRAM</p> <p>TSVP TALK</p> <p>How Cognitive Constraints Shape Our Decisions and Actions</p> <p>Jan. 25 15:00-16:00 HYBRID LOCAL ZOOM</p> <p> Lucy Lai</p>	<p>THEORETICAL SCIENCES VISITING PROGRAM</p> <p>TSVP TALK</p> <p>Ecology and Evolution of Antibiotic Resistance in Bacterial Pathogens</p> <p>Dec 13 14:00-15:00 HYBRID LOCAL ZOOM</p> <p> Rachel Wheatley</p>	<p>THEORETICAL SCIENCES VISITING PROGRAM</p> <p>TSVP TALK</p> <p>Language Use in Humans and Machines</p> <p>Nov 30 15:00-16:00 HYBRID LOCAL ZOOM</p> <p> Raquel Fernández</p>	<p>Experimental Visiting Scholar Program</p> <p>EVSP Talk</p> <p>Life Is Like a Box of Chocolates: Our Experience With an Alternative Model Organism</p> <p>2023 Thu., October. 5th 14:30-15:45 Hybrid (B216, Zoom)</p> <p> Daniel Chourrout</p>	<p>THEORETICAL SCIENCES VISITING PROGRAM</p> <p>TSVP TALK</p> <p>Waves and Resonance From Musical Instruments to Vacuum Cleaners, via Metamaterials and Invisibility Cloaks</p> <p>Sept. 13 15:00-16:00 HYBRID LOCAL ZOOM</p> <p> Jon Chapman</p>	<p>THEORETICAL SCIENCES VISITING PROGRAM</p> <p>TSVP TALK</p> <p>Quantum Signatures of Chaos</p> <p>Sept. 7 15:00-16:00 HYBRID LOCAL ZOOM</p> <p> Akira Shudo</p>	<p>THEORETICAL SCIENCES VISITING PROGRAM</p> <p>TSVP TALK</p> <p>Analytical Validation of Variational Models for Epitaxially Strained Thin Films: A Review</p> <p>August 10 15:00-16:00 HYBRID LOCAL ZOOM</p> <p> Paolo Piovano</p>	<p>THEORETICAL SCIENCES VISITING PROGRAM</p> <p>TSVP TALK</p> <p>Black Holes and the Holographic Principle</p> <p>July 20 15:00-16:00 HYBRID LOCAL ZOOM</p> <p> Daniel Grumiller</p>
<p>THEORETICAL SCIENCES VISITING PROGRAM</p> <p>TSVP TALK</p> <p>Quantum Error Correction via Poset Metrics</p> <p>July 13 15:00-16:00 HYBRID LOCAL ZOOM</p> <p> Mahir Bilen Can</p>	<p>THEORETICAL SCIENCES VISITING PROGRAM</p> <p>TSVP TALK</p> <p>Quantum Data Science?</p> <p>July 6 15:00-16:00 HYBRID LOCAL ZOOM</p> <p> David Meyer</p>	<p>THEORETICAL SCIENCES VISITING PROGRAM</p> <p>TSVP TALK</p> <p>People, Environments, Sensors: Cyber Opportunities for Exploring Human Mobilities</p> <p>May 18 15:00-16:00 HYBRID LOCAL ZOOM</p> <p> Christophe Claramunt</p>	<p>THEORETICAL SCIENCES VISITING PROGRAM</p> <p>TSVP TALK</p> <p>From Gravity to Quantum Clocks (And Rulers!)</p> <p>Apr. 27 15:00-16:00 HYBRID LOCAL ZOOM</p> <p> Artur Tsoibanjan</p>	<p>THEORETICAL SCIENCES VISITING PROGRAM</p> <p>TSVP TALK</p> <p>Robot Learning: Where Science Meets Fiction</p> <p>Apr. 13 15:00-16:00 HYBRID LOCAL ZOOM</p> <p> Jochen Steil</p>	<p>OUTSTANDING VISITING SCHOLAR PROGRAM</p> <p>DVSP TALK</p> <p>SHOULD I STOP OR SHOULD I GO? EXCESSIVE RELEASE OF NEUROTRANSMITTER RELEASE AT MANIPULATED SYNAPSES</p> <p>2023 FRI., MARCH 31st 14:00 - 15:15 Hybrid (LOCAL, Zoom)</p> <p> CHRISTIAN ROSENMUND</p>	<p>THEORETICAL SCIENCES VISITING PROGRAM</p> <p>TSVP TALK</p> <p>Meta-Research & Meta-Analysis in Ecology & Evolution</p> <p>Mar. 16 16:00-17:00 HYBRID LOCAL ZOOM</p> <p> Shinichi Nakagawa</p>	<p>THEORETICAL SCIENCES VISITING PROGRAM</p> <p>TSVP TALK</p> <p>Topological Phases and Universal Fractional Quasiparticles</p> <p>Feb. 17 16:00-17:00 HYBRID LOCAL ZOOM</p> <p> Jeffrey Teo</p>
<p>THEORETICAL SCIENCES VISITING PROGRAM</p> <p>TSVP TALK</p> <p>Feedback Control and Variability in the Nervous System</p> <p>Jan. 12 16:00-17:00 HYBRID LOCAL ZOOM</p> <p> Timothy O'Leary</p>	<p>THEORETICAL SCIENCES VISITING PROGRAM</p> <p>TSVP TALK</p> <p>TIME IRREVERSIBILITY IN TURBULENCE</p> <p>DEC. 15 16:00-17:00 HYBRID LOCAL ZOOM</p> <p> GUIDO BOFFETTA</p>	<p>THEORETICAL SCIENCES VISITING PROGRAM</p> <p>TSVP TALK</p> <p>A BODY-FIRST APPROACH TO COGNITIVE SCIENCE</p> <p>NOV. 24th 16:00-17:00 HYBRID LOCAL ZOOM</p> <p> MOG STAPLETON</p>	<p>THEORETICAL SCIENCES VISITING PROGRAM</p> <p>TSVP TALK</p> <p>PRIMES, PARTITIONS AND POWER SERIES: MATHEMATICAL TRUTHS AND PROOFS FROM EUCLID TO RAMANUJAN</p> <p>OCT. 20th 16:00-17:00 HYBRID LOCAL ZOOM</p> <p> MARK WILDON</p>	<p>THEORETICAL SCIENCES VISITING PROGRAM</p> <p>TSVP TALK</p> <p>PLATON'S SYMMETRY</p> <p>OCT. 6th 16:00-17:00 HYBRID LOCAL ZOOM</p> <p> KYOJI SAITO</p>	<p>THEORETICAL SCIENCES VISITING PROGRAM</p> <p>TSVP TALK</p> <p>COLLECTIVE INTELLIGENCE IN LIVING/ NONLIVING SYSTEMS</p> <p>SEPT. 29th 16:00-17:00 HYBRID LOCAL ZOOM</p> <p> TAKASHI IKEGAMI</p>	<p>THEORETICAL SCIENCES VISITING PROGRAM</p> <p>TSVP TALK</p> <p>WHAT IS QUANTUM MECHANICS ABOUT?</p> <p>SEPT. 15th 16:00-17:00 HYBRID LOCAL ZOOM</p> <p> LEON LOVERIDGE</p>	<p>THEORETICAL SCIENCES VISITING PROGRAM</p> <p>TSVP TALK</p> <p>SUB-RIEMANNIAN GEOMETRY IS EVERYWHERE!</p> <p>SEPT. 9th 10:40-11:40 HYBRID LOCAL ZOOM</p> <p> SEBASTIANO NICOLUSSI GOLO</p>
<p>THEORETICAL SCIENCES VISITING PROGRAM</p> <p>TSVP TALK</p> <p>MODELING NETWORKS REVEALS HOW NEURAL CONNECTIVITY TRANSFORMS SPACE INTO TIME</p> <p>AUG. 5th 10:00-11:00 HYBRID LOCAL ZOOM</p> <p> MERAV STERN</p>	<p>THEORETICAL SCIENCES VISITING PROGRAM</p> <p>TSVP TALK</p> <p>MODELING NEURON-ASTROCYTE INTERACTIONS IN THE BRAIN</p> <p>AUG. 4th 16:00-17:00 HYBRID LOCAL ZOOM</p> <p> KERSTIN LENK</p>	<p>THEORETICAL SCIENCES VISITING PROGRAM</p> <p>TSVP TALK</p> <p>A GENERATIVE MODEL OF COMMUNICATION IN THE BRAIN</p> <p>JUL. 21st 16:00-17:00 HYBRID LOCAL ZOOM</p> <p> PROF. DANA BALLARD</p>	<p>THEORETICAL SCIENCES VISITING PROGRAM</p> <p>TSVP TALK</p> <p>KNOTS AND MODULARITY</p> <p>JUL. 7th 16:00-17:00 HYBRID LOCAL ZOOM</p> <p> ROBERT OSBURN</p>	<p>THEORETICAL SCIENCES VISITING PROGRAM</p> <p>TSVP TALK</p> <p>CAN WE HOPE FOR SIMPLICITY WHEN DESCRIBING THE BRAIN?</p> <p>JUN. 23rd 16:00-17:00 HYBRID LOCAL ZOOM</p> <p> LEENOY MESHULAM</p>	<p>THEORETICAL SCIENCES VISITING PROGRAM</p> <p>TSVP TALK</p> <p>FROM COFFEE CUPS TO CONDUCTIVITY: TOPOLOGICAL PHASES OF MATTER AND BEYOND</p> <p>JUN. 16th 16:00-17:00 HYBRID LOCAL ZOOM</p> <p> DANIEL BULMASH</p>	<p>THEORETICAL SCIENCES VISITING PROGRAM</p> <p>TSVP TALK</p> <p>DATA SCIENCE FOR THE EHT BLACKHOLE SHADOW IMAGING</p> <p>JUN. 2nd 16:00-17:00 HYBRID LOCAL ZOOM</p> <p> PROF. SHIRO IKEDA</p>	<p>THEORETICAL SCIENCES VISITING PROGRAM</p> <p>TSVP TALK</p> <p>Diagrammatic Algebra</p> <p>Apr. 19 16:00-17:00 HYBRID LOCAL ZOOM</p> <p> Chris Bowman</p>



Courses for Students at OIST

- OIST has a three-term **academic year**, starting in September each year.
Term 1: September 1 to December 31
Term 2: January 1 to April 30
Term 3: May 1 to August 31
- **Mini Courses** are flexible in terms of content, timing and delivery. It's also straightforward to set these courses up, and the lecturer can determine the scope, the audience, requirements, etc.
- Credit-bearing PhD courses are a little complicated and require that the lecturer work with an OIST faculty member to host the course, as only OIST faculty are currently MEXT (Ministry of Education) approved for teaching. Such course also has to be formalized and go through an approval process at OIST, which takes a few weeks.
- This form contains a **list of topics that have been requested by students**: [Mini Courses](#)

[OIST internal Link with more information](#)





Other events and offices at OIST

- [Workshops at OIST](#): please feel free to join the scientific sessions of any seminars/workshops/symposia at OIST
- [Center for Professional Development and Inclusive Excellence \(C-Hub\)](#)
Their programs and activities are focused on supporting every individual's professional development and capacity for growth. Please feel free to contact them regarding individual consultations or join their workshops
- [Innovation](#): If you are interested in Industry Partnerships, Entrepreneurship, Starups, Technology Transfer/Development, or have Intellectual Property Questions please reach out to OIST Innovation – they are happy to help. Please also feel free to join their event



**Innovation in
Okinawa for
global impact**

OIST | **Innovation**



- 5-year PhD program
- Applicants eligible for admission with a bachelor's degree
- 3 enrollment terms per year: May, September and January
- Research and education delivered in English
- Independent research, individually tailored curriculum
- Student-faculty ratio is 1:3
- Research Assistantship from 2.52 million JPY up to 3.6 million JPY
- Tuition fee is covered from Research Assistantship (540,000 JPY per year)
- Travel support for domestic/international conferences
- Student rate on-campus housing
- Family support (childcare facility on campus)
- PC support



Application Deadline	Interview	Enrollment Terms
November 15, 2025	February 2026	2026: May, September 2027: January
March 31, 2026	June 2026	2026: September 2027: January

- 3 to 6 months internship to experience research at OIST
- Eligibility: Students currently enrolled in their last two years of bachelor’s degree and master’s degree or recently graduated students
- Possibility to be involved in publishing papers, especially with longer internship periods
- Opportunity to meet with other young scientists from all over the world
- Internship Allowance – 2,400 JPY per working day
- Travel Expenses – One direct round-trip air ticket
- Accommodation – Furnished accommodation on or off campus
- Administrative Support – Acquisition of Certificate (CoE) for visa application as well as registration procedures at the local municipality office



Application Deadline	Result Announcement	Period of Internship
October 15, 2025	Late December 2025	Between April 1 – September 30, 2026
April 15, 2026	Late June 2026	Between October 1, 2026 – March 31, 2027

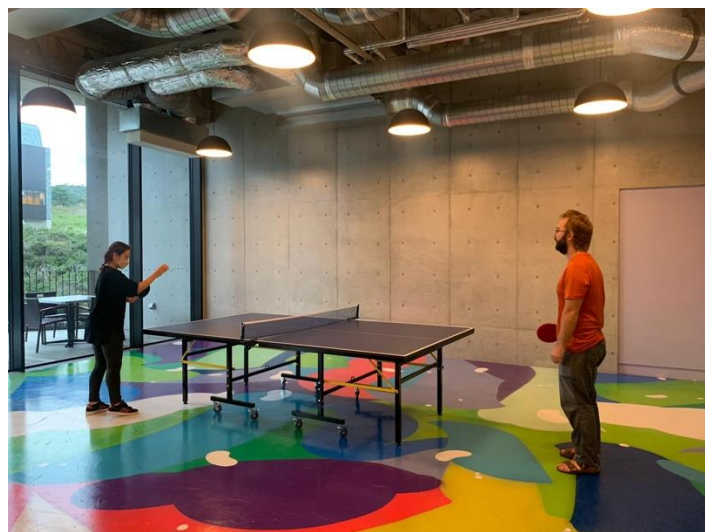


Social activities

- We have a [Twitter](#) and [LinkedIn](#) pages to promote our events. We also started a [Facebook group](#) for previous, current, and upcoming visitors to get in touch with each other
- **TSVP Teatime:** Informal meetings and discussion over tea / coffee in the TSVP area (usually in weeks without talks Thursday at 4pm)



OIST Visiting Programs





Campus Information

The offices are usually shared with one other visitors of the TSVP and located in Lab 5 EF03.
You will be provided an OIST ID card and email address.

-> **Outlets and LAN/Ethernet are below the silver insert of the desk**



Printing

-> print from USB stick* directly at the printer in L5EF03a *FAT32 file format

OR install network printer (requires OIST account)

In **Windows**, use the file explorer's address bar to go to: \\printer.oist.jp

double click Printer **L5EF03A**, this is the printer in the Visiting Programs office area. Another one is in the main hall.

The drivers should be automatically installed, after which you will be able to print

(if not check these [detailed instructions](#) and / or download the below drivers first): [Instructions for Mac](#)

The printer is an ApeosPort-VII C3373, drivers are available here:

https://www.fujifilm.com/fb/download/eng/apeosport/7_c3373

- **OIST/Microsoft username** is xxx-yyy@oist.jp, while the email is xxx.yyy@oist.jp (this often leads to errors)
Use of wired LAN/Ethernet requires OIST username and configuration in the system
[IT Knowledge Base - OIST Networks and Connectivity Services \(service-now.com\)](#)
- Outlook and other OIST services require the setup of Multi-factor Authentication (MFA):
https://oist.service-now.com/sp?id=kb_article_view&sysparm_article=KB0014173
MFA is requested per device when accessing **from outside** the OIST network
(campus wired LAN, Wi-Fi : OIST, OIST-2.4G)
- If you have any questions or concerns, please contact the IT Division at <https://oist.service-now.com/sp> or it-help@oist.jp.





Campus Information

Meeting Rooms

If you got your OIST email address, you should be able to book rooms via Outlook calendar (app or online version), by adding the room as "Location" when creating a meeting in the calendar.

Please use this ability sparingly and contact us if you want to reserve a larger seminar room!

Note that the **OIST/Microsoft username** is required.

Here is a list of Meeting rooms with zoom/AV function: <https://groups.oist.jp/av/av-rooms>

Meeting rooms near the Visiting Program Office area :

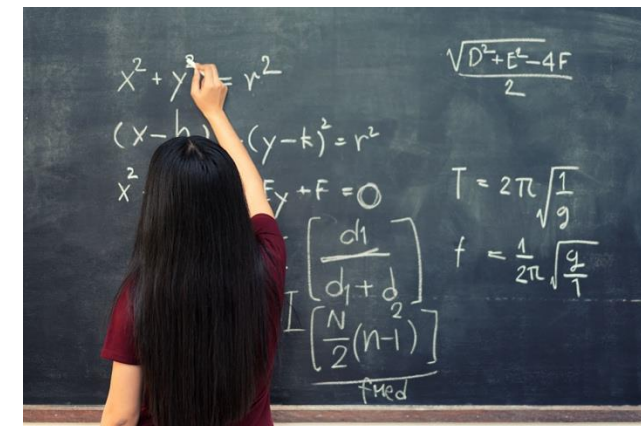
L5EF02: small room for 6 people, zoom/AV

L5EF06: small classroom, zoom/AV, projector, blackboard, large window

L5EF11: classroom, projector, zoom/AV, large **blackboards on two long walls**

L5EF12: 12 people, zoom/AV, large table, large screen, zoom features

L5D23 is the large seminar room (60 people) on D floor with projector and camera/zoom



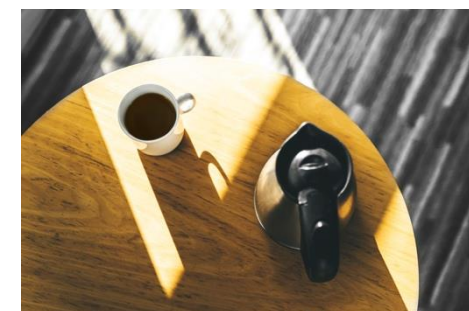
Library

The library can be accessed by all visitors and is open Mon-Fri, 9-17:30. Your OIST-ID card may not work to enter - in that case, please ask the receptionist to open the door for you.

If you plan to visit the library regularly you can get a [24-hour access card](#).

Coffee

There are coffee makers in our Visiting Program Office area (Lab 5 EF03), feel free to use and make a pot of coffee for yourself and other visitors (free of charge). Please wash used cups and return them to the shelf. In addition, there is an espresso machine for single cups in the little tea kitchen on F floor, up the stairs from the TSVP area (please deposit 100JPY when you use it). Alternatively, you can find [vending machines](#) in various locations, e.g. the Lab 5 Level D atrium area (drinks) and the Lab 4 level D lounge area (which also has table tennis) and many other locations.





Campus Information

Shops and restaurants on campus can be found here:
<https://www.oist.jp/visitors-center-shops-restaurants>
(the Cafeteria is mainly only open for lunch and sells lunchbox in the afternoon. The café is open until 6pm but sells only a few hot meals)

A convenience store called “**AEON**” (formerly Jimmy’s) is located in the Village Center (near the gym) and offers a variety of foods and daily necessities.
Open: Monday through Sunday, 8am-8pm

Several food vendors come to OIST on weekdays to sell baked goods, lunch boxes (Japanese: *bento*): <https://groups.oist.jp/csd/fruits-and-vegetable-truck>

Onna no eki farmer’s market usually comes every Mon. & Fri. 12:30-13:30, to the Lab 1 parking lot to sell fresh locally grown vegetables and fruits.

Other IT and campus-related information
For other information you can check: <https://tida.oist.jp/links>
TIDA = OIST intranet (accessible on campus or if logged in).

The **TSVP website** strives to list all relevant information for our visitors:
<https://www.oist.jp/visiting-program/visitors-information>

Note: The search function on the OIST website does not reliably find information, neither does Google since it cannot index OIST-internal websites.



Onna no Eki
Fresh organic produce
grown locally
Every Friday
12:30-13:30



Monday	Tuesday	Wednesday	Thursday	Friday
<div>Mizuno Rinkaku Baked goods 1000 10/7&10/23</div>	<div>Komebiji Vegan bento 1200-1400 Tue- Fri from 10/8</div>			
<div>Wrench Indian Restaurant 1200-1400 Mon- Fri</div>	<div>Korean Kitchen Siegel Baked goods 1200 ONLY 10/8</div>	<div>Ken's Burrito Burrito 1200 From 10/9</div>		
<div>Mr.KATO Vege Bowl 1200 From 10/16</div>	<div>Lekkernijen Baked goods 1430</div>	<div>Kino Store Baked goods 1430-1630</div>		<div>Mr.KATO Vege Bowl 1200</div>
<div>COCOPAN BAKERY Gluten free breads 1500 From 10/7</div>				

Lab 1

 Lab 1 Parking lot

Center Court

Parking Near Village Center

Lab 4

 Lab 4 Level D

Please email foodservices@oist.jp for inquiries.

ADD CONTENT TIDA STORIES LINKS MARKETPLACE RECOMMENDATIONS SOCIAL EVENTS

Search

Home / Links

IT (Information Technology)

IT Service Portal (IT Support, ServiceNow)

Getting Started (IT)

Password Reset

Faculty

FEF (Faculty-Executive Forum)

Faculty Lunch

Faculty Handbook (TREC, PREC, ERC)

Faculty Council

Faculty Assembly

HR (Human Resources)

HR Relocation

Respectful Workplace Policy

Careers

HR Platform for Evaluations (Assessments)

HR Platform

HR (Human Resources)

Guest Registration System

Guest Registration System Login

Guest Registration System Manual



Recommended spots

The following Google map contains recommendations from previous visitors as well as shops near OIST (not intended as endorsement):

<https://www.google.com/maps/d/edit?mid=1FgkGP-jdXGUqs9sujL5rUPZZt5GrLIk>





Frequently Asked Questions

Who should I contact for...?



TSVP Team: Anything related to the program: visa, duration of your stay, your TSVP Talk, check-out procedures,...

The Gardens Office /Village Office: Anything related to your on-campus apartment. Problems like defect furniture or appliances, questions regarding how to use the washing machine, or how to separate the trash,...

Resource Center (located down the hill from AEON in the Village Center): Any questions about living in Japan. The resource center can help you to make (private) rental car, taxi, or restaurant reservations, as well as give you information about sights in Okinawa, etc. You can go there directly or e-mail/call them.

Recreation Services (located in the same office as Resource Center): OIST Gym, rooms for social gatherings at OIST or the Seaside House (non-academic events), OIST Clubs, Activities, and key/battery pickup for rental bicycles.

OIST Researchers/RUAs (Research Unit Administrators): If you want to schedule a discussion or seminar in a research unit please approach researchers directly or by asking the unit's RUA.

* if you live in an apartments *not* located in the Gardens, contact the Village Office (located opposite of AEON)

Village Office Phone number: 098-982-3150 (Weekday 9:00-18:00, Weekend until 17:00)

How can I find...?

Unfortunately, the search function on the OIST website often does not deliver the required answers. We recommend browsing the TSVP page, which contains a lot of links and information that we included after previous visitors asked about those topics. Be sure to login with your OIST account to see pages visible only to OIST community members (e.g., the shuttle bus schedule, or On-Campus info).

In addition, the below page which lists links to useful OIST resources is often helpful (use "Find in Page" function/Ctrl+F):

<https://tida.oist.jp/links>





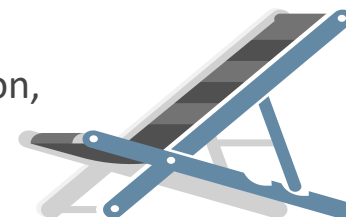
Frequently Asked Questions

Can I leave Okinawa during my visit?

Travel during term of appointment

While it is encouraged for all visitors to stay in Okinawa during the whole term of appointment, travel might be permitted for important reasons like attending a conference, meeting a collaborator, or teaching duties. Documentation, like invitation letters, and adherence to OIST travel rules are required.

The visitor has to inform OIST *before* departure on any trips.



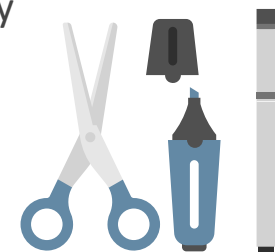
In general, the following applies:

- (a) Visitors agree at the onset on the total number of days they will spend at OIST and are free to make other arrangements respecting that number, as long as it does not impact their research and OIST rules are adhered to.
- (b) Changes in the committed number of days are exceptional, requiring special circumstances and approval.
- (c) **OIST payments are limited to days spent at OIST**, this includes travel insurance. I.e. visitors will have to arrange their own travel/health insurance if they intend to spend time away from OIST during their term of appointment for private or non-OIST business.

Can I get...?

All offices are equipped with monitors. If you require a cable or adapter we may be able to help.

We might also be able to help get you a keyboard and/or mouse, or you can check the "Reuse Corner" next to the Supply Store in Lab1 B107 for cables and electronics you might need.



... for the apartment

We have a limited amount of items donated by previous visitors that we can lend you, e.g. a hair dryer, an iron, or snorkeling fins. If you notice items in your apartment that are not listed on the furniture list, they were likely donated.

We cannot replace them, but you might be able to find something appropriate in the [OIST Marketplace \(on TIDA, the OIST intranet\)](#).



Frequently Asked Questions

When will I get paid?

We usually start the procedures for your payment at the end of each month, after which payments to your registered bank account are issued around the 15th of the following month (also depending on the OIST accounting section's workload). Therefore, depending on your arrival day, it might take six weeks or more for your first payment to be issued.

In case you booked your flights to come to Japan by yourself, we unfortunately cannot reimburse you until we get a scanned copy of your return trip boarding pass (as well as the booking invoice and outgoing boarding pass).



Where can I withdraw money?

There is an Okinawa Bank ATM in the center building not far from the cafeteria, however, it does not accept most international cards. In the Aeon convenience store in the Village Center on campus (close to the tunnel/main entrance) there is an ATM that accepts international cards. You can also withdraw money from almost all ATMs at convenience stores, the post office, and supermarkets for a small fee, on the other hand ATMs at most banks will probably not work with international cards.

What should I do in case of natural disasters (typhoons)?

Here is the emergency information from the OIST resource center: <https://www.oist.jp/resource-center/emergency>

OIST itself is an emergency evacuation point with an electric generator, so there should be power even after a natural disaster.

OIST Typhoon guidelines (mainly for employees but contains weather tracking info): <https://www.oist.jp/resource-center/typhoon-guidelines>





Frequently Asked Questions

Can I book a meeting room?

Using Outlook calendar with your OIST account you can book meeting rooms at OIST. Here is a list of rooms in the various building:

<https://groups.oist.jp/av/av-rooms>

Especially for big rooms, please use this sparingly and consult with us before you plan any bigger events (meeting rooms >16 people).



Can I get accommodation for guests I am inviting?

In general, it is not possible that we provide accommodation for your guests. In some cases when we have an opening and the guest is participating in a seminar etc it might be possible. Please ask the TSVP Team about this.

For all other cases, here is a list of **hotels near OIST**:

<https://groups.oist.jp/oes/hotel-information>

This PDF includes some price information (in Japanese, OIST-internal)

<https://groups.oist.jp/sites/default/files/imce/u302/Accommodation%20in%20Onna.pdf>

Many of the Hotels are somewhat expensive (15,000 - 20,000 JPY per night).

Kafuu Hotel is a popular choice. **Peridot Smart** is not listed there but **is the closest hotel to OIST**.



In general, we recommend Hotels near Fuchaku/Tiger Beach/Moon Beach in Onnason or in Ishikawa (near Akasaki/Tabata) where the OIST shuttle bus is running which might be convenient (for you to visit the guests or for them if they received an OIST guest card and are allowed to use the shuttle bus).



Sports at OIST



Can I go to the gym / sport / cultural courses and activities?

Visiting Researchers can use the **gym**. Please register [via this form](#) (please choose “Guest”). After that you will need to schedule an appointment with recreation.services@oist.jp to pay for a month use in Yen to activate your OIST ID card for entry to the gym. Unfortunately, the process is a bit inconvenient for our visitors. For regular OIST employees the fee can be deducted from the salary, but that is not (yet) possible for TSVP visitors.

There are **many other sports and activities** at OIST which you can find on the [OIST Recreation Services website](#). Many of them are free. OIST employees and students also get together in clubs for various activities (e.g. Ballet, Climbing, Frisbee, Martial Arts, Soccer, Yoga...) As for other gyms and pools in the area please check here: <https://www.oist.jp/resource-center/gyms-and-pools#toc2>





Garbage Rules



Flammable



Non Flammable



Plastic Bottles



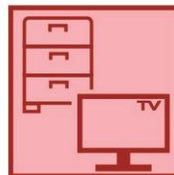
Cans



Glass Bottles



Clothes



Large Trash



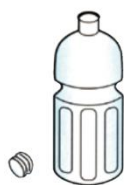
Hazardous Trash



Paper



PET bottles
No cap, no label



There are *many* different types, but mostly you have to separate between “burnable”, PET bottles, cans, and glass bottles



← [Video explanation](#)

[Overview of the rules](#) →





Green Okinawa

Green Okinawa is a community effort to be more environmentally friendly in Okinawa.

It is spearheaded by the OIST Resource Center team and volunteers. The series is full of practical information to help people to reduce greenhouse gases and protect our planet from climate change.

Reach out to resourcecenter@oist.jp to share your know-how with us and get involved in writing a post.



Green Okinawa (18)

Find places where you can fill up your water bottles!



Green Okinawa (17)

Solar installation at home - post 1



Green Okinawa (16)

Japanese labels for environmentally-friendly products



Green Okinawa (15)

Coral Safe Sunscreen



Green Okinawa (14)

Less Plastic Life



Green Okinawa (13)

Beach Cleaning



Health

For emergency

If you or anyone is in a crisis, please call

- OIST Help Line: **098-966-8989** [24hrs/ 7days]
- **Fire Engine / Ambulance: 119**
- Police: **110**
- Health Center (see below)

OIST Clinic

- Location Lab4 C12 (next to Lab 4 entrance)
- Open hours Mon/Wed/Fri 13:00 – 16:00 (please check website!)
- Phone 098-982-3446 [ext. 23446]
- Fax 098-966-8242
- Email clinic.appointment@oist.jp / health@oist.jp
- Website <https://www.oist.jp/clinic>

Other Health related information (from resource center)

<https://www.oist.jp/resource-center/health-insurance-pension>

List of clinics around OIST

<https://www.oist.jp/resource-center/clinics-info>





Health

The [OIST Clinic](#) is available for visitors, with psychiatrists and internal medicine doctors and nurses.

However, please understand that children cannot be accepted, as eligible patients are over 18 years of age.

Please see their web page [here](#). If visitors have any health concerns or need assistance from the OIST Clinic, please feel free to contact them at health@oist.jp (also regarding advice for your children).

The Nishioeda Clinic(西大條診療所), which is in walking distance to OIST, also provides pediatric care and confirmed that it can accept infants too.

Below is a list of medical facilities near OIST.

- Nishioeda Clinic([Google map](#))
- [Onna Clinic](#) ([Google map](#)) - the OIST shuttle bus stops near this clinic
- [Minori Internal Medicine Clinic](#) ([Google map](#)) - the OIST shuttle bus stops near this clinic

All of the above clinics are internal medicine, but if a referral to a specialist is needed, they will refer you.





The Ocean / Marine Sports

Many visitors are interested in the ocean / marine sports and it is highly recommended. There are plenty of beaches near OIST, the closest being Tancha Beach (down the hill), Diamond Beach, Nabee Beach, and Tiger/Moon beach - the latter two have life guards during swimming season. Swimming, snorkeling, diving, SUPing, kayaking, surfing and many more things are just a few minutes away.

However, recently an OIST student tragically died at Apogama beach. Please **take good care, check the conditions and wear a life jacket before going into the ocean.**

A rather safe option are guided snorkeling tours, e.g. to the Blue Cave at Cape Maeda, just 20min from OIST. Tours are available for around 3000 JPY per person, sometimes discounted to just 1000 JPY (one example:

https://en.activityjapan.com/feature/okinawa_aonodokutsu_snorkeling_ranking/).

The **OIST Resource center** can also recommend (safe) water activities.

We recommend the following website made by Okinawa Prefecture to check safety, wave, tide, and other **information about beaches, snorkeling and diving spots** around Okinawa: <https://map.marinesafety.okinawa>

If you find yourself in need of **emergency assistance**, call 118 for the coast guard and 119 for an ambulance

Visit Okinawa Safety Information website:

<https://visitokinawajapan.com/plan-your-trip/useful-information/enjoying-okinawa-safely/>

Marine Leisure Hazards

5 factors of Marine leisure accidents

Weather

Weather is an important factor in marine condition and it can change quickly and unexpectedly. Always check weather information before going to the sea

Drinking Alcohol

Drowning accidents of intoxicated people are often reported. Never drink alcohol before and during marine activities.

Tide

Changes in tide level strongly affect marine conditions. Always pay attention to the tide.

Venomous Animals

There are some venomous marine animals in Okinawa, and related fatalities are often reported.



"Chironex quadratus" by OpenCage, CC BY-SA 2.5, via Wikimedia Commons
https://upload.wikimedia.org/wikipedia/commons/4/46/Chironex_quadratus.jpg



"Stone fish" by SeanMack, CC BY-SA 3.0, via Wikimedia Commons
https://upload.wikimedia.org/wikipedia/commons/5/57/Stone_Fish_at_AQWA_SMC2004.jpg

Rip Current

A rip current is a strong current that moves away from shore. It is impossible to swim against the current. Swim parallel to the shore across the current to escape.

Marine accident fatalities reported around OIST

Cape Manzamo	3	Blue Cave	1
Apogama	7	Seragaki	1
Cape Maeda	5	Kibougaoaka Beach	1

Public Beaches Notified to the Public Safety Commission in Accordance with Prefectural Ordinance



To save your life

- Always wear a life-jacket
- Carry your phone in a waterproof pouch
- Call 118 in case of emergency



Encounters in the ocean/on land

	Yearly Encounters/Injuries	Yearly Deaths
Habu snake	60	0
Marine life	248 158 jellyfish, 30 stonefish/scorpion fish, 20 sea urchins, 40 unknown	1 death since 1983 picked up stone fish to play
Marine activity	93 about 50% swimming/snorkeling, 20% diving, 10% fishing, 10% walking on rocks	25 -> most common problem is rip currents
Traffic accidents	6600 -> Okinawa has 4x more drunk driving arrests than national average	53 mostly early morning within 5km of home

*rough numbers from various sources/different years

Water Safety Information from the OIST Resource Center

OIST Online Water Safety Training



Link: <https://learn.oist.jp/catalog/view/course/id/702/title/Water%20Safety%20Training>

Note: Family members can access this training using the account listed below.

- Login URL : <https://learn.oist.jp/start/op/login>
- Username : externalmembers
- Password : oist

Venomous Animals

There are some venomous marine animals in Okinawa, and related fatalities are often reported.



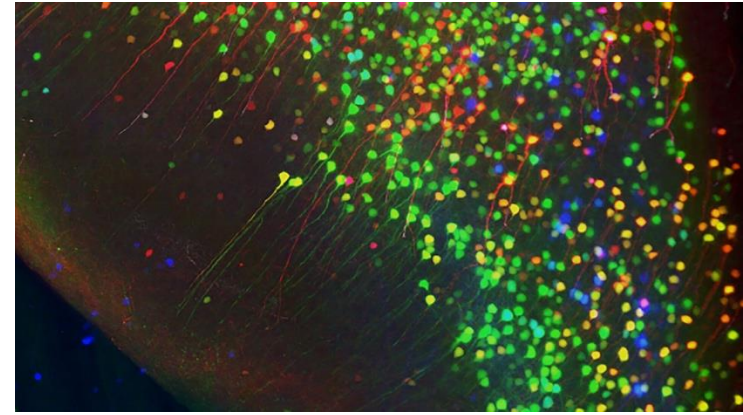
Rip Current

A rip current is a strong current that moves away from shore. It is impossible to swim against the current. Swim parallel to the shore across the current to escape.

The most venomous animal in Okinawa is the blue ringed octopus whose venom can kill a human in seconds. However, there have been only 4 cases worldwide since the beginning of records.

Acknowledgements

Very important!



Please list TSVP/OIST as one of your affiliations when publishing research (partially) conducted during your visit. Please also include a short phrase in the acknowledgements, see below.

- **Affiliation:**
Theoretical Sciences Visiting Program, Okinawa Institute of Science and Technology Graduate University, Onna, 904-0495, Japan
- **Acknowledgement in case of per diem:**
This research was conducted while visiting the Okinawa Institute of Science and Technology (OIST) through the Theoretical Sciences Visiting Program (TSVP).
- **Acknowledgement in case of salary:**
This research was conducted while funded by the Theoretical Sciences Visiting Program (TSVP) at the Okinawa Institute of Science and Technology (OIST).

*EVSP visitors please replace accordingly with "Experimental Visiting Scholar Program (EVSP)"



Leaving Okinawa (see website for details)



- OIST Email:** If you have an OIST email address it will stop working on your last day. There is NO message that the account is no longer active, so we recommend to set an automatic reply referring to your main email address.
- Prepare to Move Out**
We recommend to start preparing 1-2 weeks in advance. If there is any damage in the room please let us know! We will visit you one week before check-out for a room check. Before you move out, please take out all the trash, and do basic cleaning (dishes, sweep...). See this page for the details of the [check-out procedure](#) for your apartment
- Sell/Donate/Dispose of Personal Belongings**
[OIST Marketplace](#) (TIDA), ...
- Submit Move-out Notification to City Hall (and [post office](#))**
If you stayed in Japan for over three months
- Pay outstanding Bills, Close Unnecessary Bank Account(s)**
Make sure to pay outstanding bills,
e.g. CDC childcare, phone contract, health insurance, etc.
If you created a Japanese Bank Account and no longer need it
- Return OIST ID Card and key(s) on your last day at OIST**
Return to the TSVP Team or leave on the table in your apartment: OIST ID Card, OIST Family card and shuttle bus pass (if you have them), Office key
- TSVP Exit Report**
Please describe your stay and give us feedback about the program via this short form:
<https://forms.office.com/r/TGDCC35hPK>
- Return your Residence Card(s)**
When you are leaving Japan permanently, you need to return your Residence Card to Immigration inspector at your airport of departure from Japan (probably Tokyo).
- Stay in Touch!**
Please feel free to contact us at any time. If you want, please follow us on [Twitter](#) or [LinkedIn](#).



Hiroko Oi
(cleaning staff)

We appreciate your help, as our cleaning staff is just one person!





Exit Report/Feedback

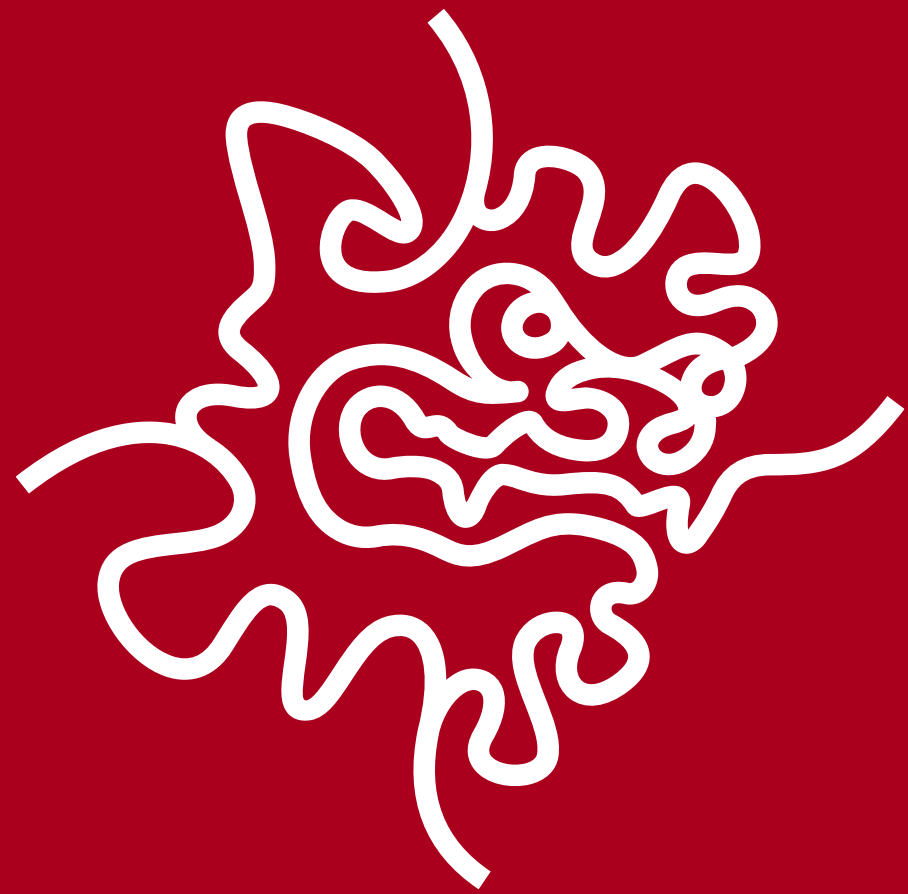


Please describe your stay and give us feedback about the program via this short form:

<https://forms.office.com/r/TGDCC35hPK>

You can also leave recommendations for other visitors.





にふえーでーびる!

niffee deebiru = Thank you in Okinawan