

Shopping Guide Map

This is to introduce shops and stores where newly arrived OIST members can buy necessary supplies.

This map will focus on areas where people can reach by the OIST shuttle bus since members who are new to Okinawa usually do not own a car by the time they arrive.

If you would like to get information on the shops in wider range, please refer to [HERE](#).

(Last update: March 2025)

Table of Contents

- [Areas around OIST](#)
 - [Ishikawa Area \(Ishikawa Line\)](#)
 - [Route towards Onna no Eki \(Ishikawa IC Line, Ishikawa Line\(weekends\)](#)
 - [Route towards Onna Village Office/Marine Science Station \(Serakaki Line\)](#)
- [Categories of stores](#)
 - [Grocery store](#)
 - [Drug store](#)
 - [Electronic appliance](#)
 - [100 yen shop](#)
 - [Convenience store](#)
 - [Discount store](#)
 - [Shopping mall](#)
 - [Farmer's market](#)

Areas around OIST

Onna Village & Ishikawa of Uruma City

The map on the next page is divided into 3 parts.

Block 1 shows the Ishikawa district of Uruma City, where most stores near OIST are located.

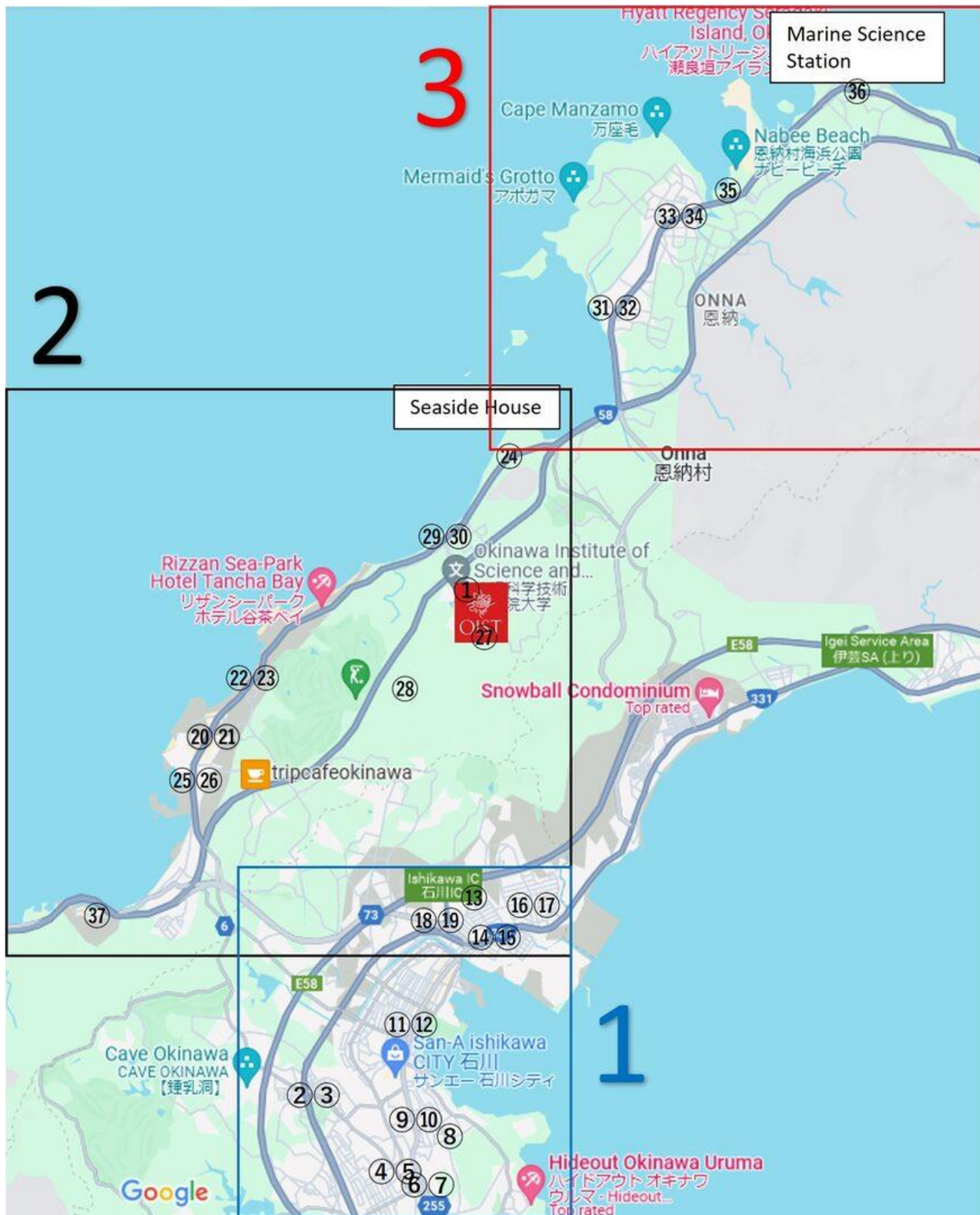
Block 2 shows the route along the sea. You can go to Onna no Eki or the beaches from this route.

Block 3 shows the route to the Onna Village Office and the Marine Science Station.

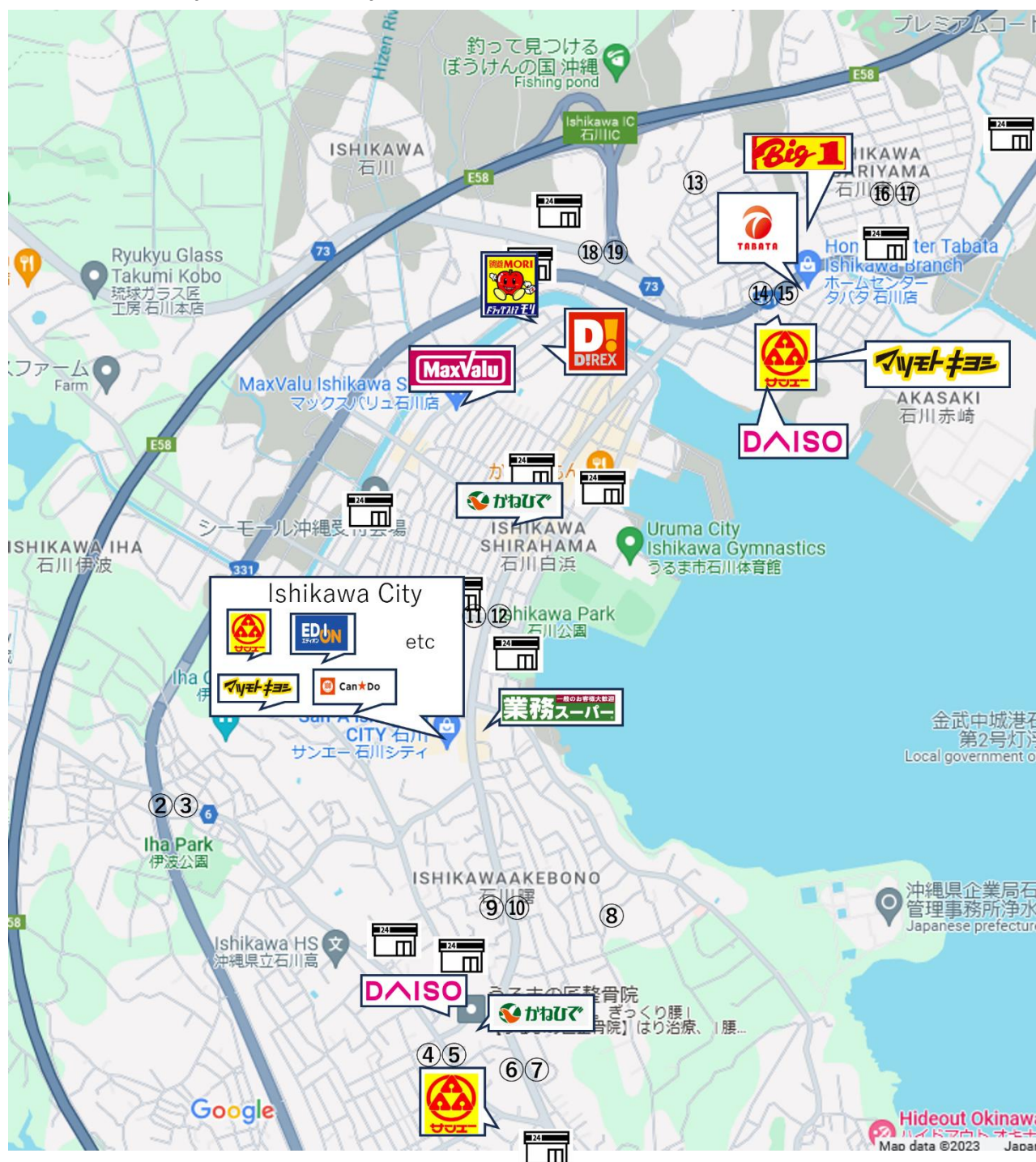
The numbers on the map indicates the locations of the shuttle bus stops.

Please refer to the BFM site for bus stop and bus route details and the time schedule.

<https://groups.oist.jp/bfm/shuttle-bus>



1. Ishikawa Area (Ishikawa Line)



Nearest stores to the shuttle bus stop

Bus stop number	Bus stop name	Stores
4,5	Maehara	Diaso , Kanehide
6,7	Higashi-onna	San-A
11,12	Nan-Ei	Ishikawa city , Gyomu super
14,15	Akasaki(/Tabata)	San-A(with Daiso, Matsumoto-Kiyoshi inside) , Tabata , Big 1
18,19	Ishikawa IC	Drug store Mori , Direx , MaxValu

2. Route towards Onna no Eki (Ishikawa IC Line, Ishikawa Line(weekends))



Nearest stores to the shuttle bus stop

Bus stop number	Bus stop name	Stores
37	Onna Farmers Market	Onna no Eki おんなの駅

3. Route towards Onna Village Office/Marine Science Station (Serakaki Line)

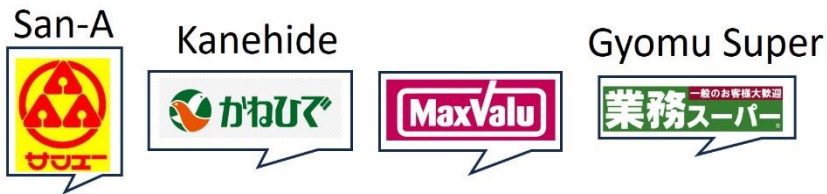


Nearest stores to the shuttle bus stop

Bus stop number	Bus stop name	Stores
33,34	Onna Village Office	Onna Kyoudou baiten 恩納共同売店 (Local grocery store)

Categories of stores

Grocery store



San-A, which has three large “A”s on a yellow background, is Okinawa’s major supermarket.

Kanehide has two orange birds on a green background.

MaxValu is a supermarket of AEON group with pink signage. They are open 24 hours.

Gyomu Super is a wholesale food store where you can buy big quantities of food at a discounted price. They also sell food products imported from all around the world.



This symbol shows other stores where you can go shopping.

Store	Business Hours	Website
San-A	9:00am – 11:00pm	Website (Mostly in Japanese)
Kanehide	7:00am – 11:00pm	Website (Japanese only)
MaxValu	24 hours	Website
Gyomu Super	9:30am - 8:00pm (Closes at 7:00pm on the last day of January, May, September)	Website
Onnna kyoudou baiten (恩納共同売店)	9:00am – 8:00pm	Website (Japanese only)

Drug store

Mori



Direx



Matsumoto
Kiyoshi



Drug stores sell over-the-counter drugs, cosmetics, cleaning, and sanitary supplies. Some stores also sell electronics and food at discounted prices. There are pharmacists/certified drug sellers in the stores, so you can ask for assistance if you need it. If you don't understand Japanese, you can write down your symptoms in English on paper and show it to them.

Store	Business Hours	Website
Drug store Mori	9:00am – 0:00am	Website (Japanese only)
Direx	9:00am – 23:00pm	Website (Japanese only)
Matsumoto Kiyoshi	9:00am – 22:00pm	Website (Mostly in Japanese)

Electronic appliance

Edion



The major electronic appliance stores in Okinawa have a wide variety of products. You may need to wait a week or two to have your purchased items delivered. They also have booths that sell cell phones and internet services.

Store	Business Hours	Website
Edion	9:00am – 10:00pm	Website (Japanese only)

100 yen shop



100 yen shops are commonly called “hyakkin” in Japanese. If you want to buy supplies and items at a very cheap price, these are the places to go. There are thousands of items sold, but it’s better not to expect much on the quality and durability.

Daiso is the pioneer of the 100 yen shop industry and has overseas locations.

Can Do is another 100 yen shops in Japan with the motto of “To move everybody by 100 yen”.

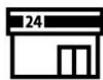
Store	Business Hours	Website
Daiso	9:00am - 10:00pm (San-A Akasaki)	Website
	10:00am - 9:00pm (Higashi-onna)	
Can Do	9:00am - 10:00pm (Ishikawa City)	Website

Convenience store



You can find convenience stores almost everywhere, sometimes several in a close proximity. Aside from food, snacks, and drinks, you can also buy daily necessities, magazines, buy tickets for events and exhibitions, use the ATM, use the printing service, and pay bills.

They are open 24/7, so if you need something very quickly, you can rely on them.



This symbol shows the locations of the convenient stores.

Store	Business Hours	Website
7-ELEVEN	24 hours	Website
Lawson	24 hours	Website
Family Mart	24 hours	Website

Discount store



Tabata sells almost everything you need for your daily life: groceries, furniture, electronics, car supplies, gardening, DIY, pet goods.

Big1 is a combination of general store and home improvement store.

Store	Business Hours	Website
Tabata	9:00am - 10:00pm (Home center)	Website (Japanese only)
	9:00am - 7:00pm (Gardening center)	
Big1	9:00am - 10:00pm	Website (Japanese only)

Shopping mall



There are several large shopping malls in Okinawa, and San-A Ishikawa City is the closest one to OIST. They contain grocery stores, food courts, electronics, clothing, over-the-counter drugs, and a variety of shops and entertainments.

Store	Business Hours	Website
Ishikawa City	9:00am - 10:00pm (Grocery store opens until 11:00pm)	Website (Japanese only)

Farmer's market

Onna no Eki



At **Onna no Eki**, you can purchase locally harvested fruits and vegetables for reasonable prices. You can also enjoy some regional cuisines such as Okinawa Soba, Sata Andagi, and Goya Chanpuru.

Store	Business Hours	Website
Onna no Eki	10:00am - 7:00pm (may vary depending on season and events)	Website (Japanese only)