

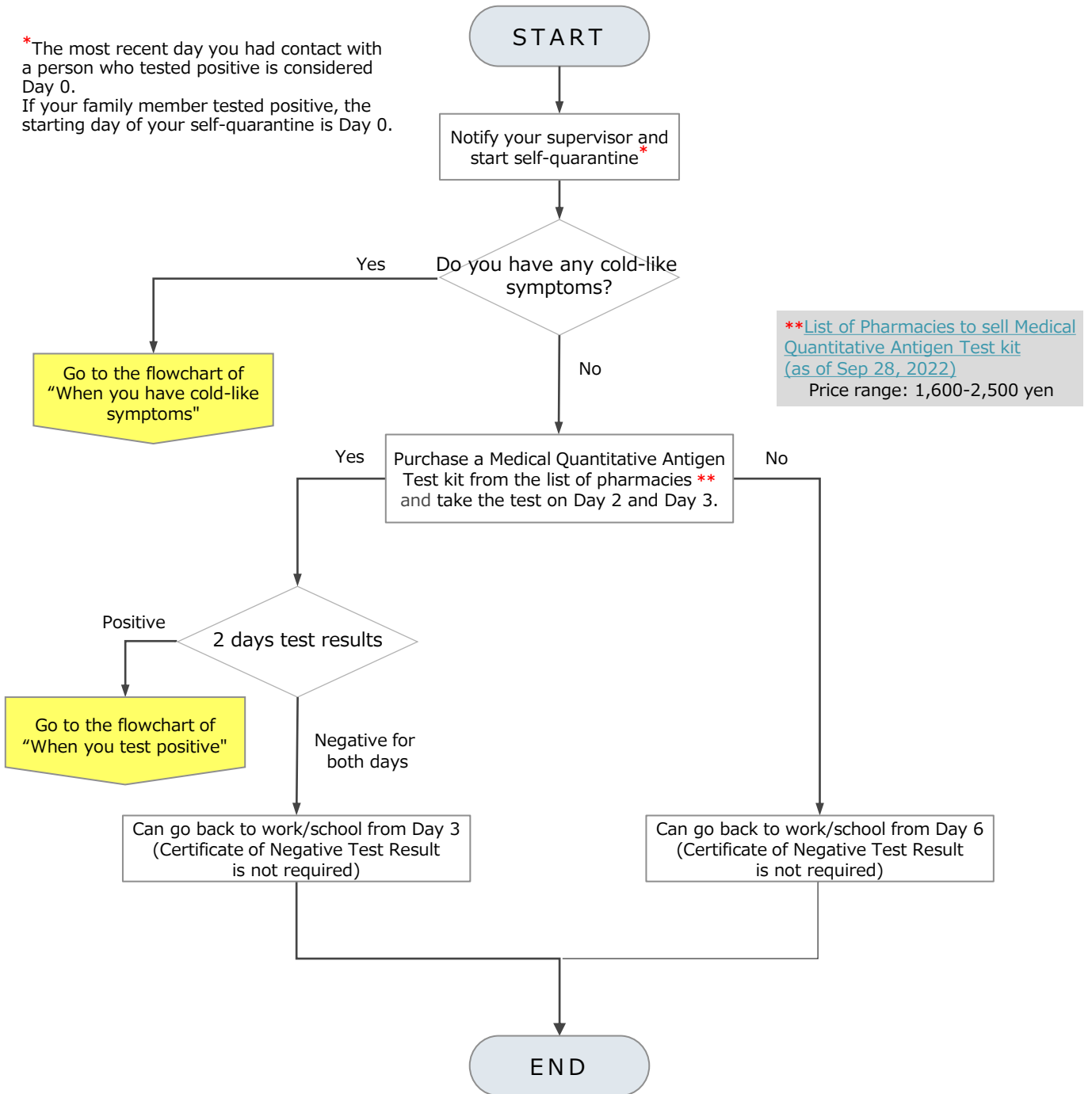


When you may be a close contact

Who is considered a close contact? (MHLW-see [Q5])

- A person living with the positive patient.
- A person who has been in contact with the patient for more than 15 minutes without necessary infection prevention measures (such as a face mask) within arms length (approx. 1 meter).
- Those who have been in direct contact with contaminants such as airway secretions or bodily fluids.

*The most recent day you had contact with a person who tested positive is considered Day 0.
If your family member tested positive, the starting day of your self-quarantine is Day 0.



**[List of Pharmacies to sell Medical Quantitative Antigen Test kit \(as of Sep 28, 2022\)](#)
Price range: 1,600-2,500 yen

For working conditions and attendance management under the influence of COVID-19, please [click here](#).
If you have any questions, please contact the OIST Health Center. Phone: 098-966-8945, health@oist.jp